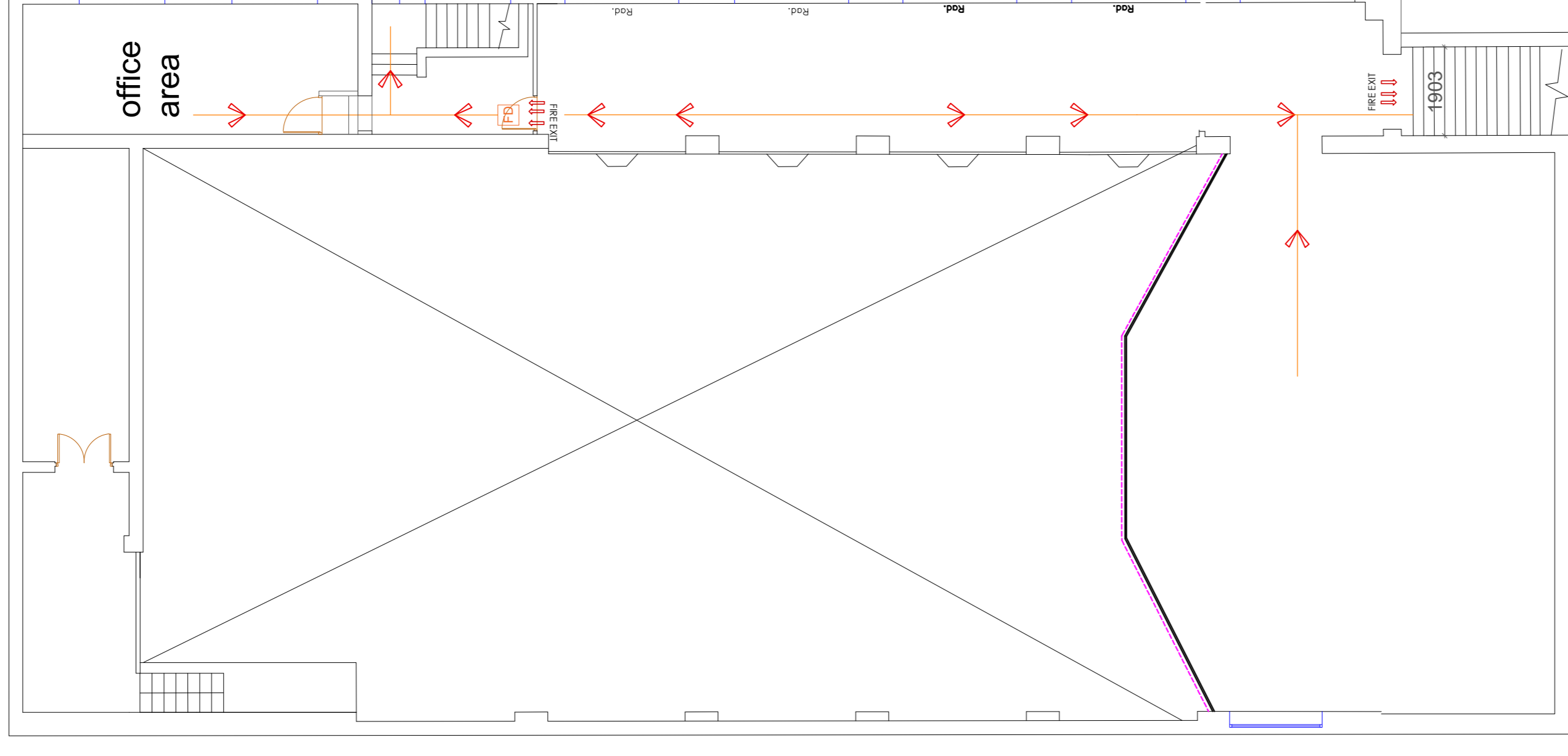


GROUND FLOOR PLAN



FIRST FLOOR PLAN

SDMC CONSULTANTS LTD.

CLIENT:- Wilton Hall
Location:- Wilton Hall
 Wilton Ave,
 Milton Keynes,
 MK3 6BN

Means of Avoiding Re-ventilation:
 In rooms with windows, common
 means of avoiding re-ventilation
 sound re-ventilation
Structural
 fire doors as specified by Structural
 Engineer
 12.5mm plasterboard to provide 30
 minutes fire protection
 3.A) Internal timber doors in the flat to be
 minimum rating of FD30 to comply with
 BS 476-22: 1987 and BS EN 1634-1: 2004
 and to be fitted with intumescent seals. All external fire exit
 doors should be fitted with push bar
 handles.

GENERAL NOTES

LEGEND	
	FIRE DOOR
	FIRE EXIT ARROWS
	BREAK GLASS
	FIRE EXIT SYMBOL
	FIRE EXIT PATH

SDMC CONSULTANTS
 400A WIDENHURST BOULEVARD,
 WIDENHURST, MILTON KEYNES,
 MK11 3JH
 TEL: 01908 619148
 MOB: 0787013148

PROJECT Wilton Hall

TITLE: FIRE REGULATIONS PLANS
REV O 1

DWG NO: 21.078.BR.001

DRAWN BY: NS
CHECKED BY: RS

Paper A1
Dimension METRIC

Scale 1:100
Date: 26-08-2021