

JOINT TRANSFORMING CARE PLAN

Author: David Pennington (Adult Safeguarding, Mental Health and Learning Disability Lead [Milton Keynes Clinical Commissioning Group]), Tel: (01908) 278724

Purpose of Report:

To provide an update of the Milton Keynes position in relation to delivering 'Transforming Care: a national response to Winterbourne view hospital' a cross-government commitment to transform care and support for people with a learning disability and/or autism.

To seek support for the current version of the plan, the governance arrangements and the process for signing off the Milton Keynes Transformation Plan prior to final submission to NHS England.

1. Background

In October 2015 NHS England, the Local Government Association (LGA), Association of Directors of Adult Social Services (ADASS) published 'building the right support' and 'a new service model'. Taken together these documents require local authorities, Clinical Commissioning Groups (CCGs) and NHS England Specialised Commissioners to come together to form Transforming Care Partnerships (TCPs). The purpose of the TCP is to build up community services and reduce inpatient provision over the next three years for Adults and Children with a learning disability and/or autism who display behaviours that challenge, including behaviours that are attributable to a mental health condition.

Milton Keynes is part of a TCP which includes three CCGs (Milton Keynes, Luton and Bedford) and four local authorities (Milton Keynes, Luton, Central Bedford and Bedfordshire). The TCP is required to produce a joint transformation plan for the next three years (see attached Annex). The draft plan was submitted on 8 February 2016. The feedback on the plan was received on 18 February 2016, it was generally very positive, and comments included 'this plan is clear and good progress has been made. The health and social care aspects are described well and the use of workforce indicators strengthens the Plan'. The MK Transforming Care Steering Group is now working on the required enhancements prior to the final submission on 11 April 2016.

2. Recommendations

1. That the resubmission of the final Joint Transforming Care Plan be supported.
2. That the Board be requested to endorse the proposal being signed off by the Chair of the Health and Wellbeing Board, the Chief Officer (Milton Keynes Clinical Commissioning Group) and the Council's Corporate Director - People.

3. That the governance arrangements being put in place for the Joint Transforming Care Plan be supported.
4. That a progress report be provided on a six monthly basis to the Board.

3. Key issues

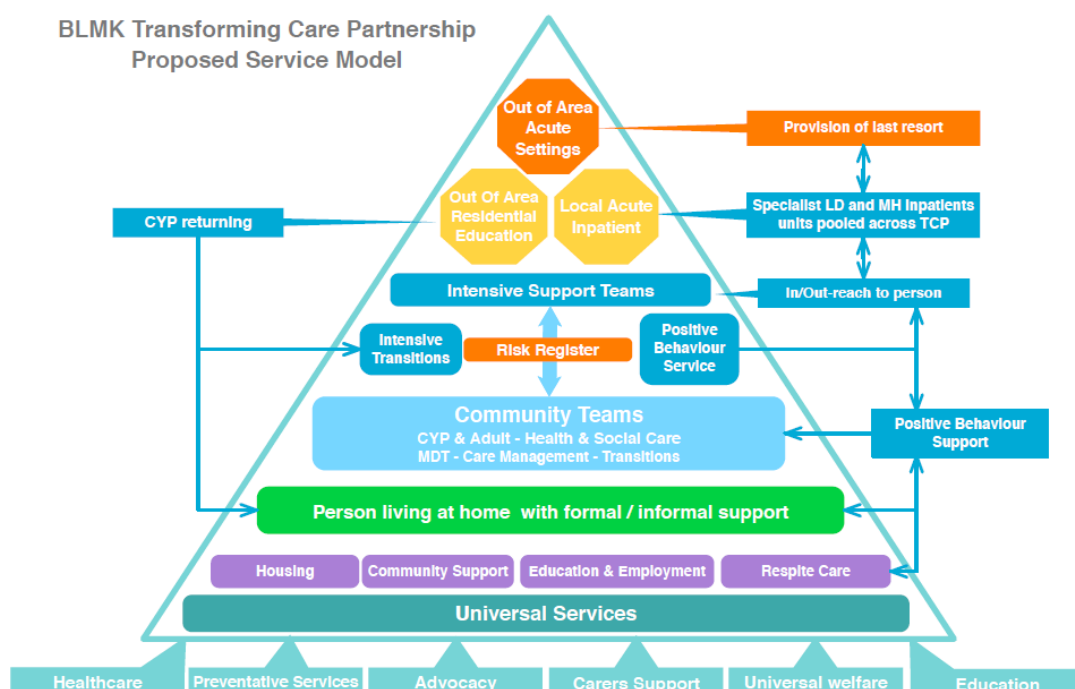
3.1 The Model

National policy documents, 'Supporting People with a learning disability and/or autism who display behaviour that challenges, including those with a mental health condition' October 2015 and the National Plan 'Building the Right Support' October 2015, set out expectations to transform care. These expectations include a national service model based on the principles of reducing the numbers of in-patient admissions for people with a learning disability and/or autism, and building resilient community services to support people to live in the most appropriate community setting.

The Milton Keynes, Luton and Bedfordshire solution based on these principles has been articulated in the Joint Transformation Plan submitted on 8 February 2016 (Annex). The plans include the development and/or strengthening of service provision in the areas of:

- Healthcare;
- Preventative Services;
- Advocacy;
- Carer support;
- Universal welfare; and
- Education and training.

The Plan proposes the service model below:



The key elements of the plan are based on the principles of

- reducing the numbers of in-patient admissions required for people with a learning disability and/or autism.
- managing effective discharge and transition for people in hospital.
- building resilient community services to support people to live as independently as possible in the most appropriate community setting.

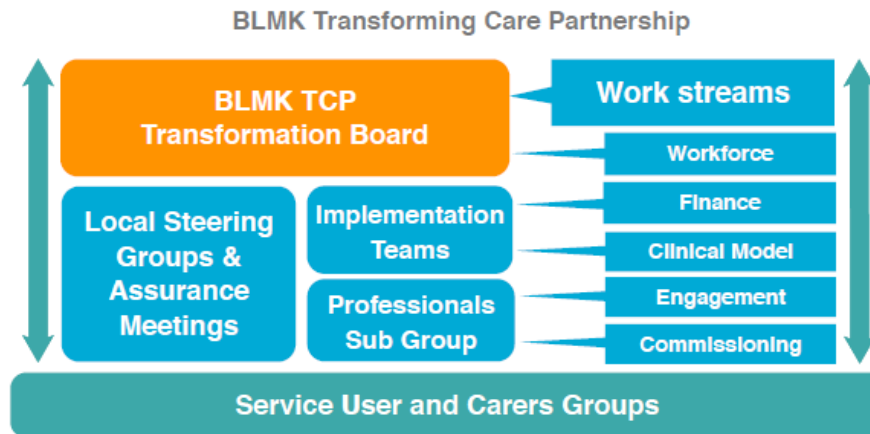
3.2 Implementation and delivery

MK CCG and MK Council are working collaboratively with our partners in Luton and Bedfordshire to develop and deliver a combined plan. Within Milton Keynes a local Transforming Care Partnership Steering group has been established to ensure effective delivery of the plan. The steering group will deliver the model in three phases as outlined in the table below:

Implementation phase	Key actions/deliverables
Phase 1 2016-17	<ul style="list-style-type: none"> • Development of shared systems for working e.g. joint preferred provider list (PPL)/Any Qualified Provider (AQP) • Scope current position across a number of key areas including current market position, enhanced supported living scheme, community services and continuing health care. • Identify the number of current and future patients likely to require forensic support. • Data analysis to inform next steps
Phase 2 2017-18	<ul style="list-style-type: none"> • Scope, plan and cost a community based forensic solution based on intelligence gathered • Map the gaps in provision for people with autism • Model the in-patient requirement across the partnership footprint, based on the planned reduction in out of area placements
Phase 3 2018-19	<ul style="list-style-type: none"> • Build the capacity and capability of the market for community services • Establish the required in-patient provision across the partnership

3.3 Governance

The work of the Bedford, Luton Milton Keynes Transforming Care Partnership is overseen by a joint transformation board. The governance structure for the delivery of the plan is shown below:



The Milton Keynes Transforming Care Steering Group, includes representation from Health and Social Care adults and children's Commissioning, provider services, and experts by experience. The Steering Group will ensure regular reporting to the Health and Wellbeing Board.

The Milton Keynes Senior Responsible Officers for this plan are; Jill Wilkinson (Director of Nursing and Quality, MKCC), and Mary Clifton (Director of Adult Social Care Milton Keynes).

4. Additional Information

None.

Background Papers: Joint Transformation Plan (Annex)