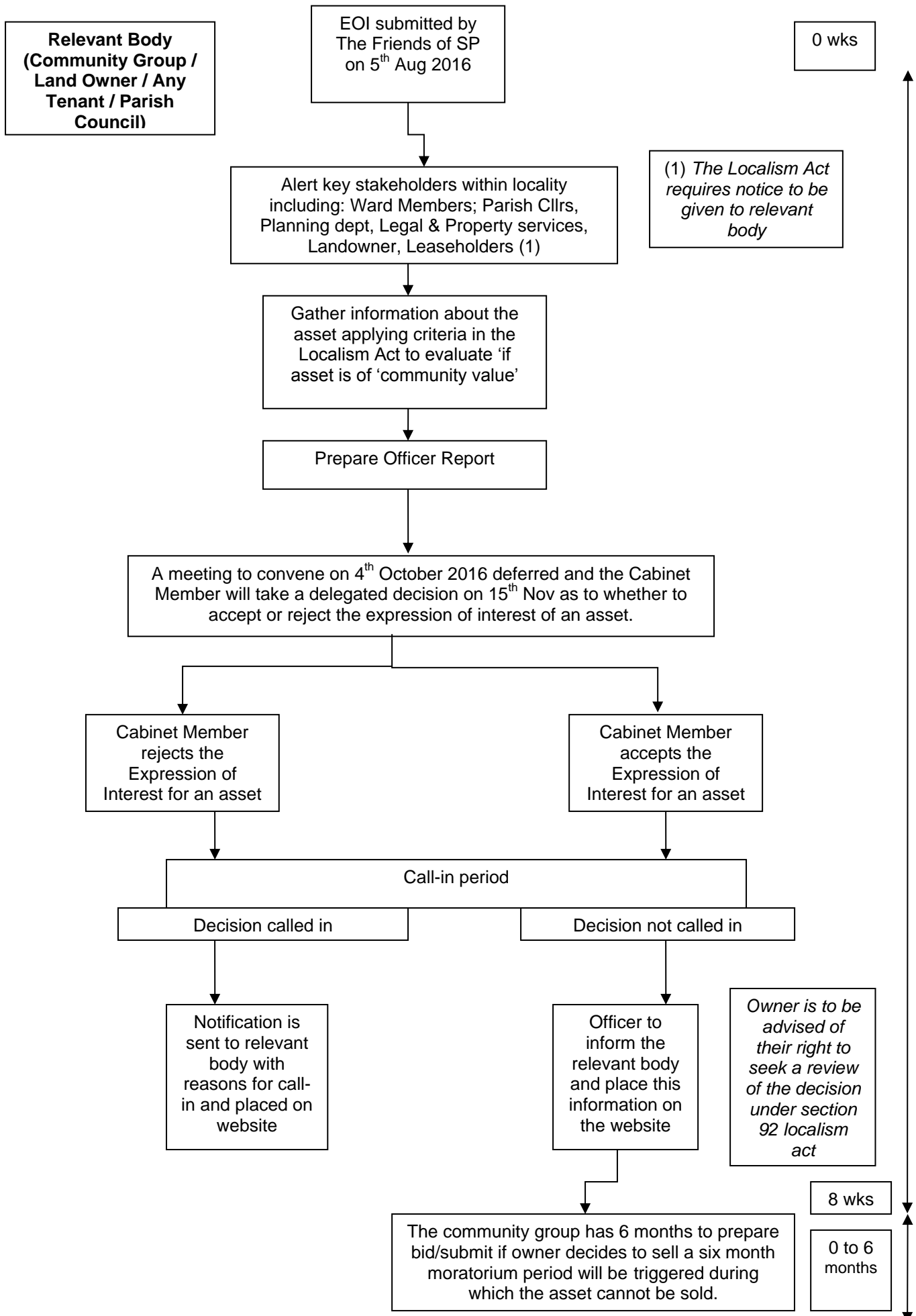
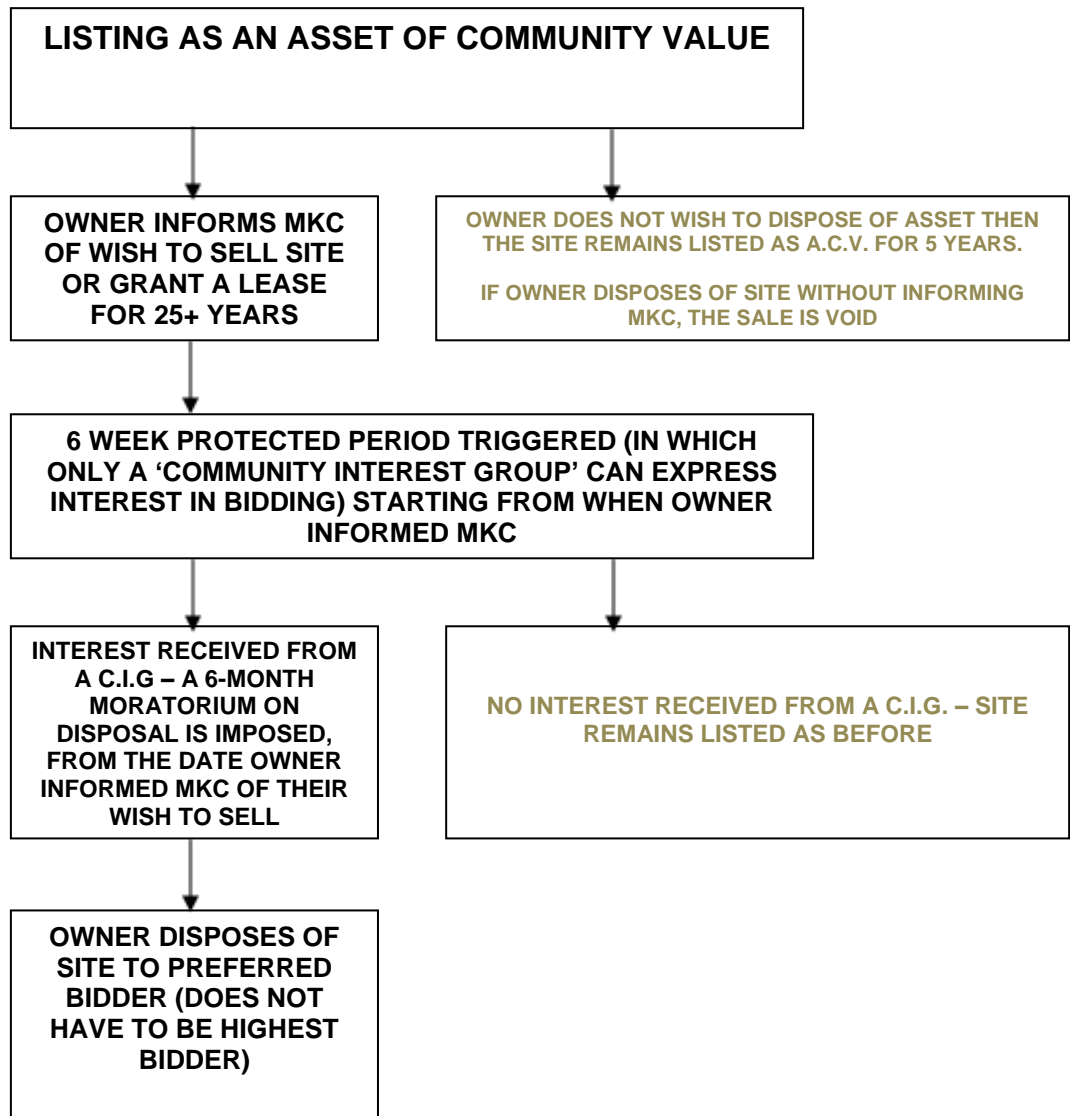


Flowchart for Community Right to Bid: **Suffolk Punch Public House**



POST DELEGATED DECISION FLOWCHART



The definition of a “community interest group” is:

- *The local parish council OR*
- *One of the following, if they have a “local connection with the land”, i.e. their activities are wholly or partly concerned within the local authority’s area or a neighbouring authority’s area:*
 - *A charity*
 - *A company limited by guarantee which does not distribute surplus to its members*
 - *An industrial and provident society which does not distribute surplus to its members*
 - *A community interest company.*