

Champion Model

Moving the model forward
and next steps



ANNEX

It starts with You!



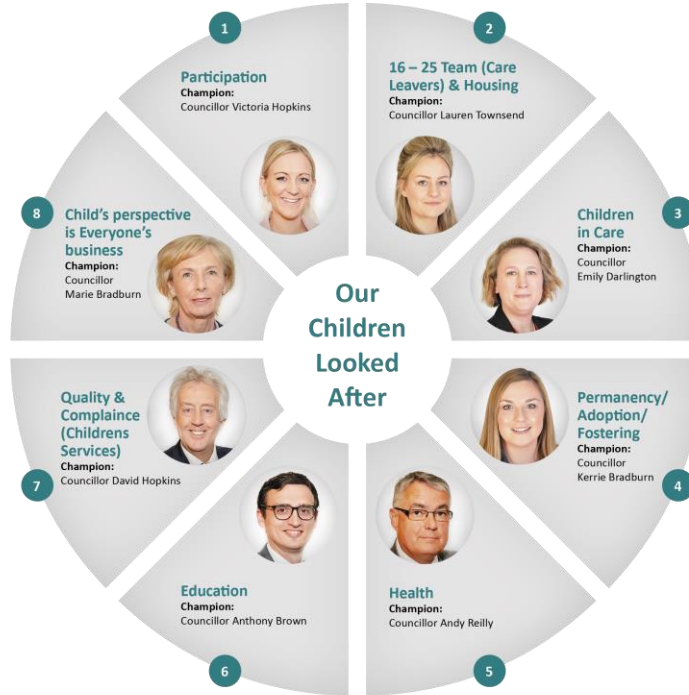
**All MKC Members
and Officers are
Corporate Parents**

Our Champion Model

Our Champion Model

Points of Contact

- 1. Richard Lee**
Participation Team Leader
- 2. Katie Connolly**
Deputy Team Manager,
16-25 Team Leader
- 3. Ashley Edwards**
Interim Team Manager,
Children in Care Team
- 4. Sharon Godfrey**
Acting Fostering
Team Manager
- 5. Mandy Park**
- 6. Jenny Cooledge**
Interim Virtual
School Headteacher
- 7. Sophie Marshall**
Head of Safeguarding
& Quality
- 8. Sivay Heer**
Head of Corporate Parenting



What is the Champion Model?

- To support and champion specific areas of need and priority that affect our Children in Care and Care Leavers.
- The Champion Model was recommend by Mark Ridell, National Care Leavers Advisor
- MKC adopted the Champion model in August 2020

1) Training for Champions

- Role and expectations of a Champion
- Role of a Corporate Parent
- Support available for Champions
- Potential positive impact of the Champion Model on the lives of our Children in Care and Care Leavers

KNOW YOUR
ROLE



milton keynes council

Role and expectations of a Champion

Attend 3 events across the year to meet and talk to Children in Care and Care Leavers

Make a difference to the lives of all young people and children including children in care/care leavers

Use your own networks and communities to enhance and support the priorities identified

Consider the needs of our Children in Care and Care Leavers in all MKC business

What is a Corporate Parent?

- Collective responsibility of the Local Authority to safeguard and provide the best possible care for Children in Care and Care Leavers
- When considering the needs of our CIC and CL, the critical question we as Corporate Parents should be asking is:

‘would this be good enough for my child?’

- Think, have I/ we made this decision with the best interests of our Corporate Children at the heart, either individually, as a service, or in any Panel/Committee or Full Council meeting

Corporate Parenting Principles

As in Children and Social Work Act 2017

- Act in their best interests, and promote health and wellbeing
- Encourage them to express their views, wishes and feelings
- To consider their views, wishes and feelings
- Make sure they have access to services
- Make sure they are safe, with stable home lives, relationships and education or work
- Promote high aspirations and try to secure the best outcomes for them
- Prepare them for adulthood and independent living

Champion Model Support

Quarterly
round
table
discussion

Champion
officer

Training
for all
Champions

Email:

[Richard.lee@
miltonkeynes.
gov.uk](mailto:Richard.lee@miltonkeynes.gov.uk)



Potential Impact on Children in Care

- Better support and services
- Improved care experience
- Improved skills and knowledge
- Increased likelihood of achieve education, employment or training post 16
- Decreased likelihood of being in custody, substance abuse, homeless

2) Engagement Opportunities 2022/23

Champion area	model	Name of Champion	Link officer	Period 1: April - July Event	Period 2: Sept - Dec Event	Period 3: Jan – March Event
Participation		Cllr Victoria Hopkins	Richard Lee	Catch up meeting	Attend Raise Your Voice	Visit Children in Care Youth Club
16-25 Housing	/	Cllr Lauren Townsend	Katie Connolly	Visit New2UK group	Catch up meeting	Attend Housing Panel
Children in Care		Cllr Emily Darlington	Ashley Edwards	Meeting with Julia Roberts, Safeguarding Team Manager	Visit Children in Care Youth Club	Catch up meeting
Fostering, Permanency and Adoption		Cllr Kerrie Bradburn	Sharon Godfrey	Catch up meeting	Visit Children who Foster Youth Club	Observe fostering panel
Health		Cllr Andy Reilly	Mandy Park	Catch up meeting	Meeting with Liz Wilson from Public Health	Attend the Health and Social Care Forum
Education		Cllr Anthony Brown	Jenny Cooledge	Attend EET operational group	Attend Virtual School Governing body	Catch up meeting
Quality and Compliance (Children's Services)		Cllr David Hopkins	Sophie Marshall	Attend Permanency tracking	Attend Management Control Information/ KPIs meeting	Attend Performance Management Meeting
Child's Perspective is everyone's business		Cllr Marie Bradburn	Sivay Heer	Learning and Inclusion performance board	Attend MKSH	Open operational managers meeting

3) Quarterly round tables

Service update from Director of Children's Services

Champion Model discussion:

- What is going well
- Lessons learnt and challenges
- Identifying themes across the model



**4) How best can
we engage all
members in the
Champion Model?**

5) Publicity in Councillors News

- Quarterly update on success of Champion Model
- Key dates/events coming up for Corporate Parenting
- 'How can I get involved' update on Champion Model
- 'Key needs/priorities' update to support positive impact on Corporate Children



**Thank you for
listening.**

Any Questions?