

Milton Keynes BCU

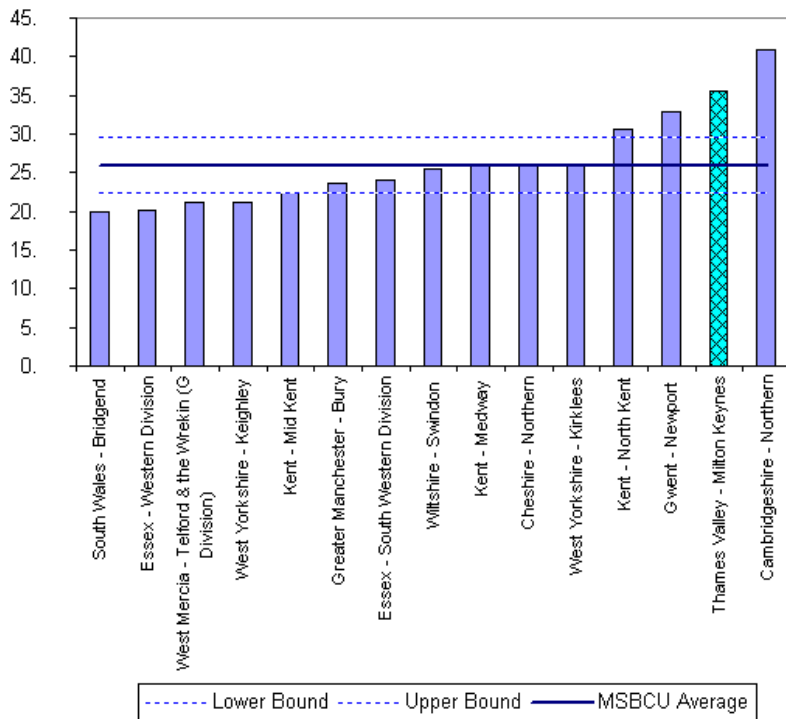


BCU Crime Overview
13th November 2006

Milton Keynes BCU

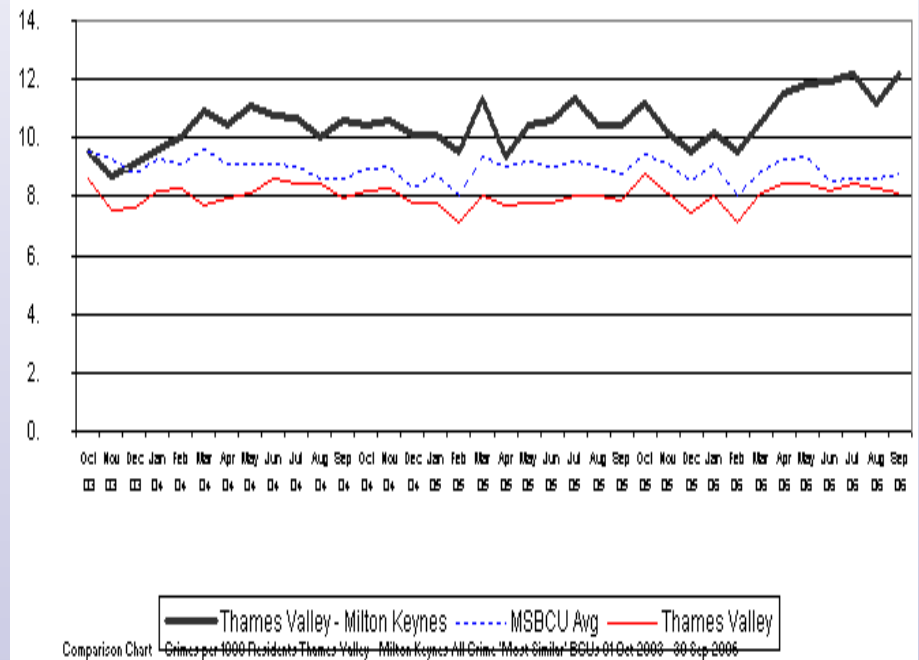
Crime per 1000 pop & Comparison iQuanta Charts

July – Sept 2006



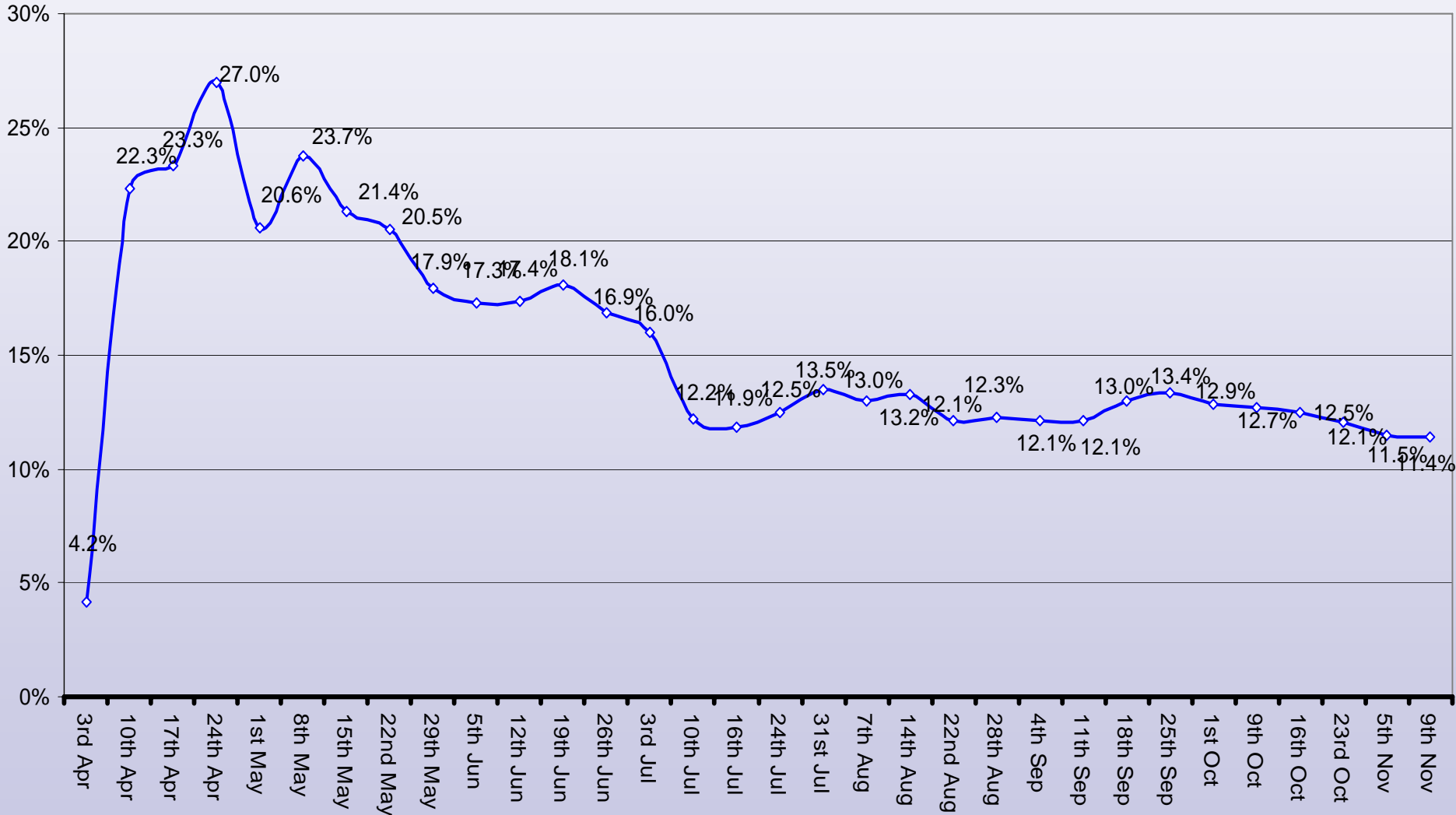
Crimes per 1000 Residents-All Crime-01 Jul 2006 - 30 Sep 2006

Oct 03 – Sept 2006

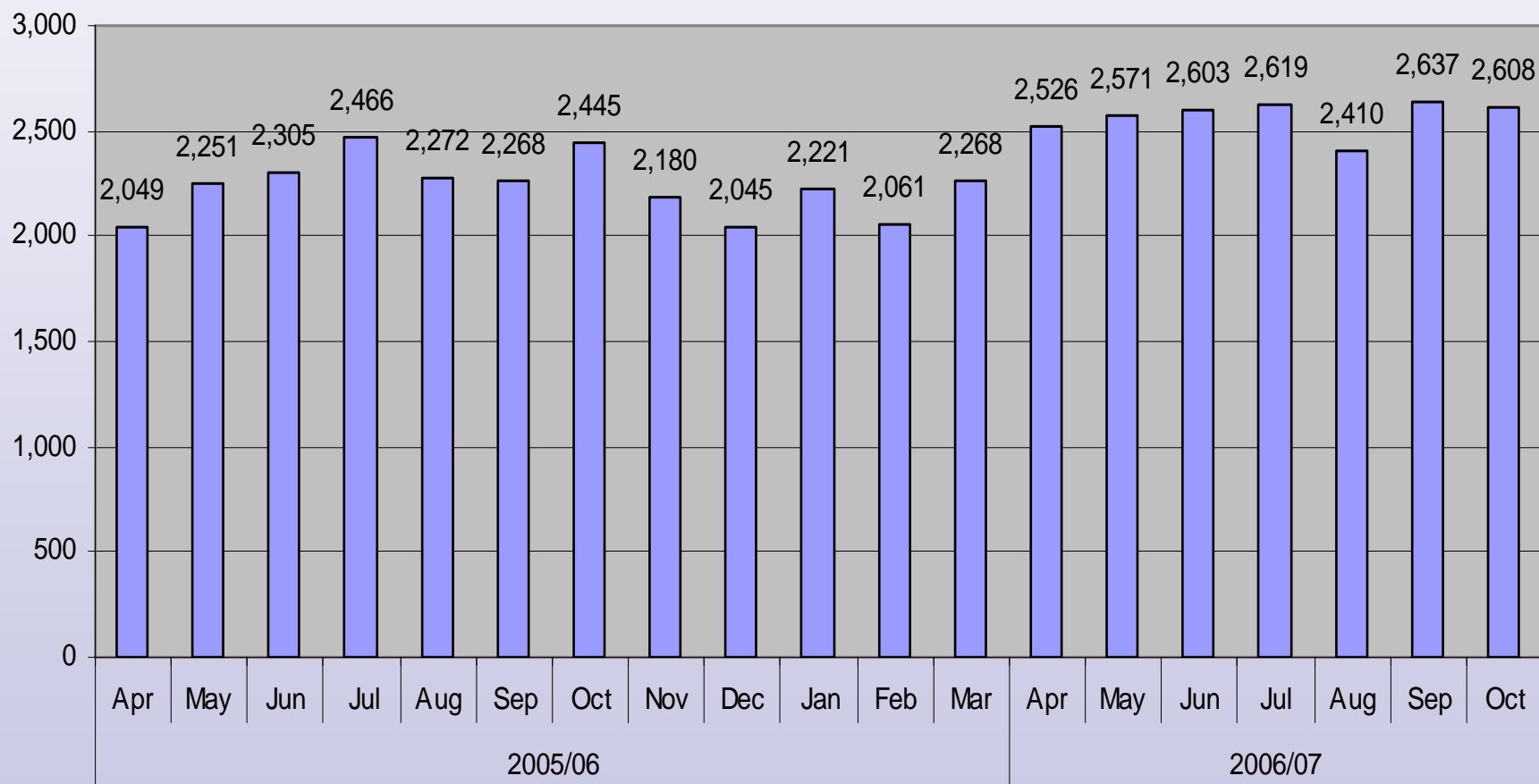


Milton Keynes BCU

Cumulative Change in All Crime



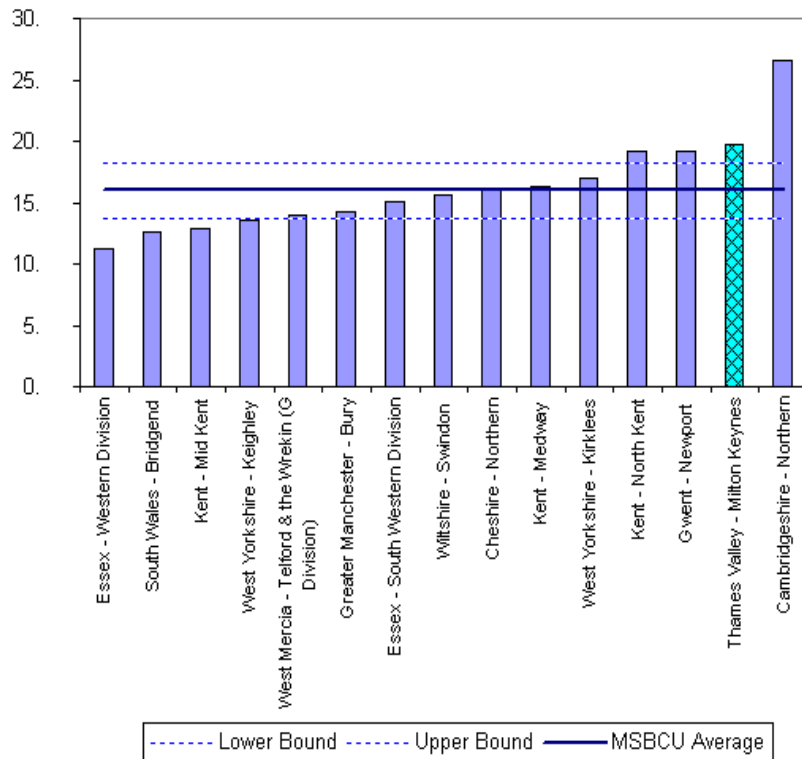
Milton Keynes BCU Monthly Crime Levels



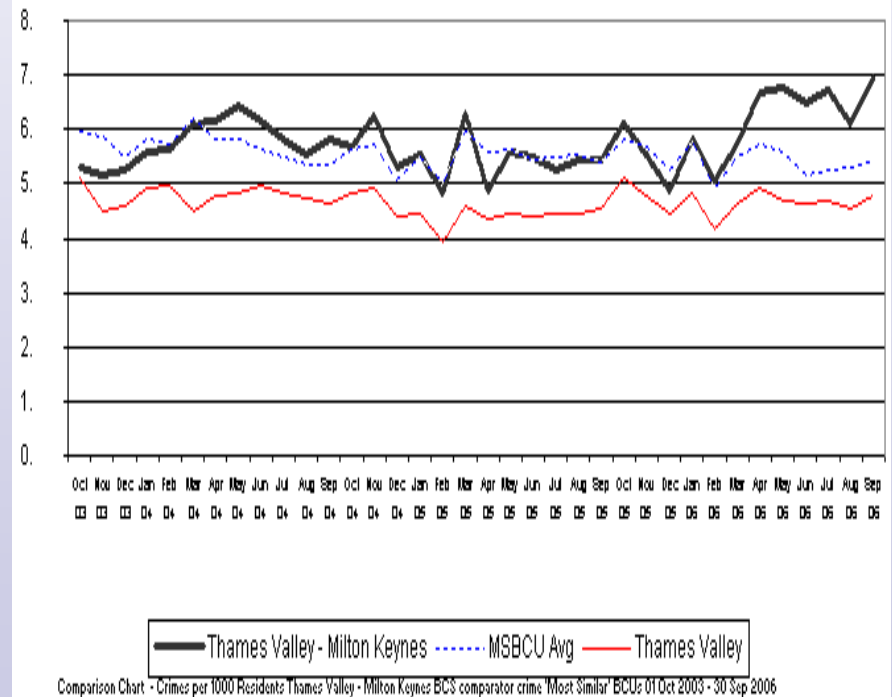
Milton Keynes BCU

BCS Crime per 1000 & Comparison iQuanta Charts

July – Sept 2006

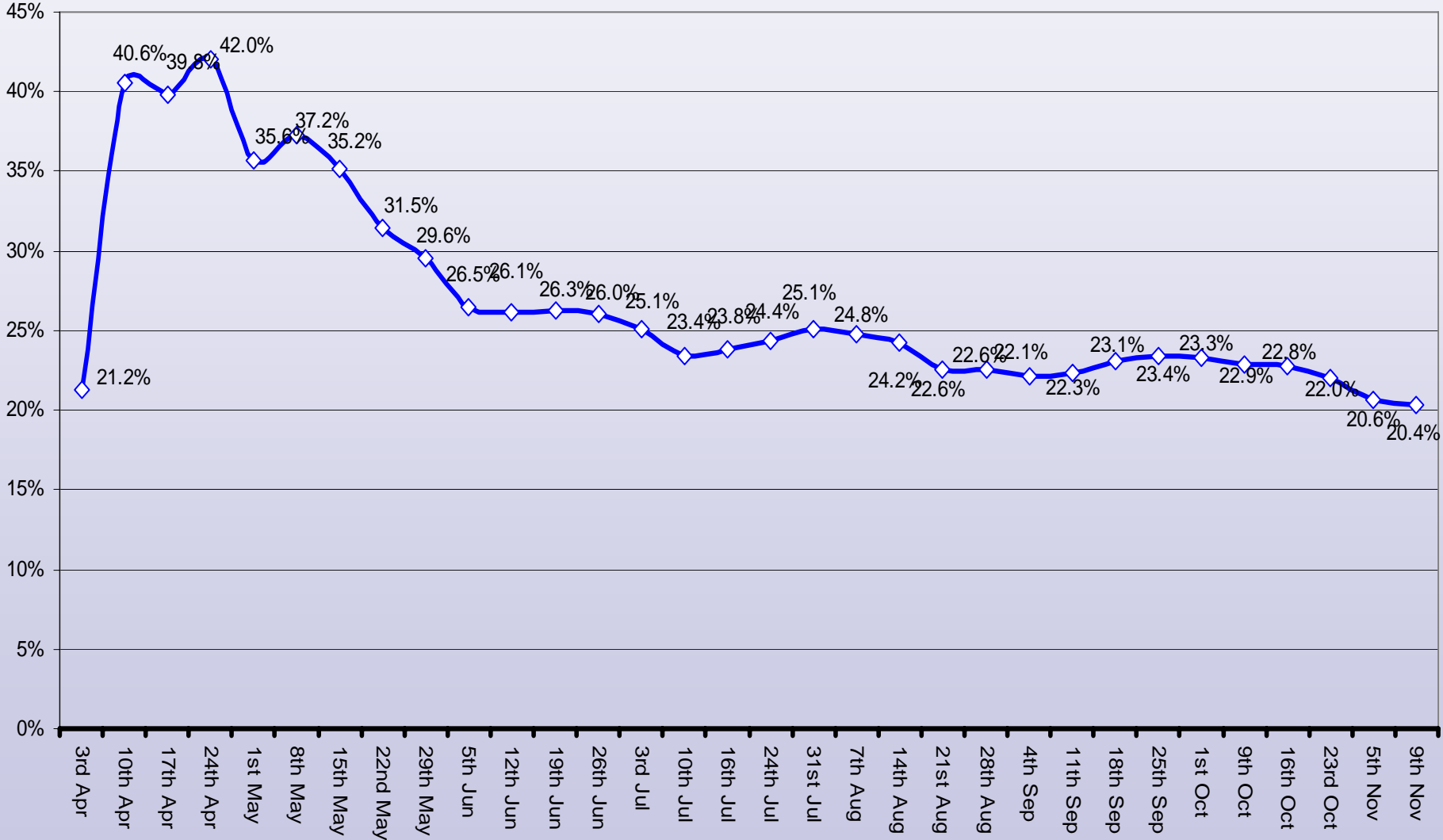


Oct 03 – Sept 2006



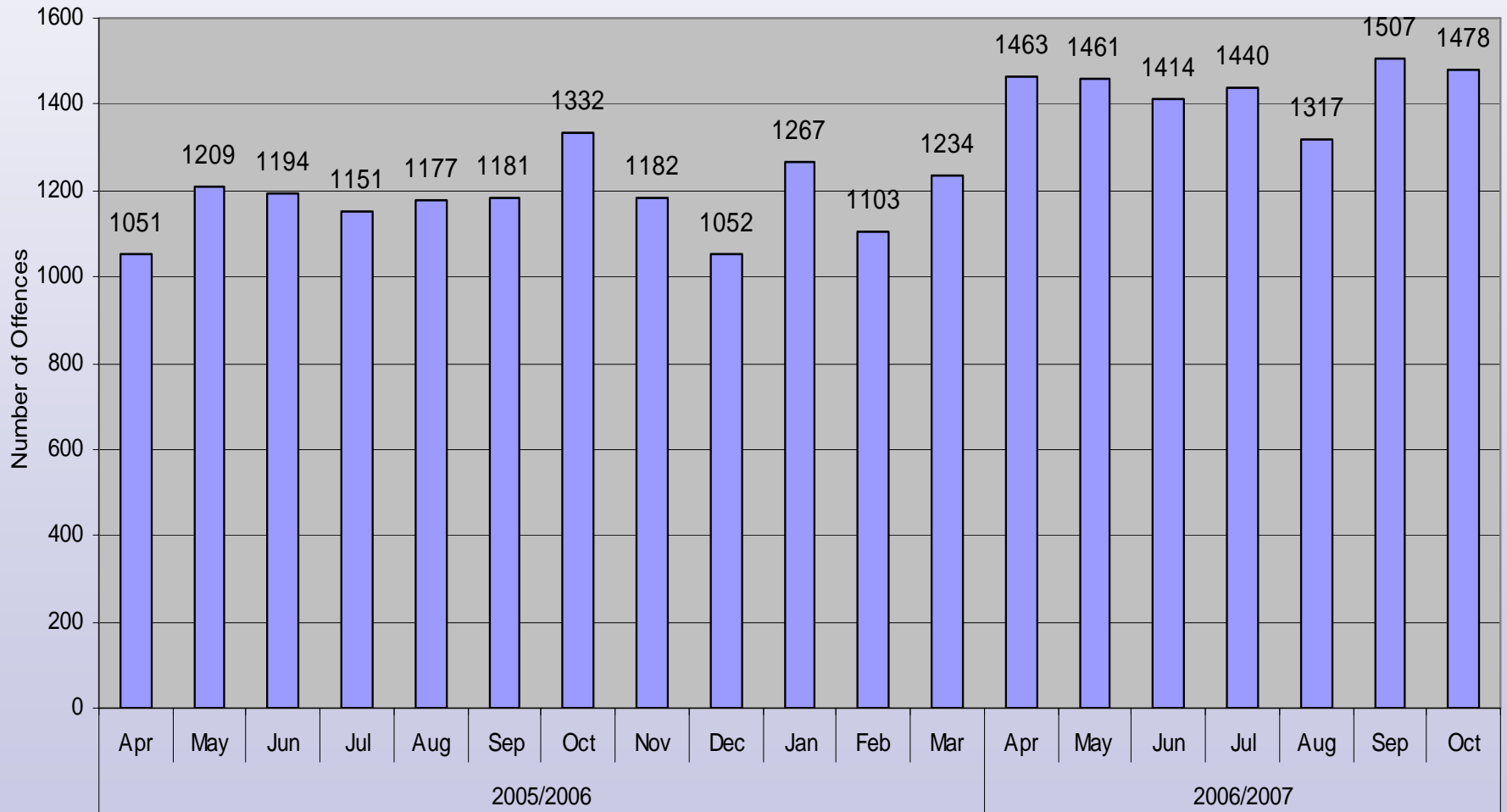
Milton Keynes BCU

Cumulative Change in BCS Crime



Milton Keynes BCU

Monthly BCS Crime Levels



MK BCU BCS Crime Input 1 April – 9 Nov 2006

	Recorded Crime		Change	Percentage Change
	2005/06	2006/07		
Criminal Damage**	3,288	3,630	342	10.40%
Theft from Vehicle	1,333	1,958	625	46.89%
Wounding *** Non DV	898	946	48	5.35%
Burglary Dwelling	528	671	143	27.08%
Common Assault* Non DV	433	629	196	45.27%
Theft of vehicle	530	567	37	6.98%
Theft of Pedal Cycle	320	417	97	30.31%
Theft from Person	310	386	76	24.52%
Common Assault* DV	155	375	220	141.94%
Wounding *** DV	451	365	-86	-19.07%
Vehicle Interference	257	306	49	19.07%
Robbery of Personal Property	176	198	22	12.50%
Total BCS Crime	8,679	10,448	1,769	20.38%

CDRP Strategy Progress

Target No.	Target	Recorded Apr - Oct			Rate Per 1000 Pop / HHs			Target Reduction 07/08
		2003	2006	% Change	2003	2006	% Change	
1	Reduce BCS Crimes	8239	10080	22.3%	38.2	46.0	20.4%	-17.5%
2	Reduce VAP in Public Place	1366	1881	38%	6.3	8.6	35.5%	-21%
3	Reduce Repeat Domestic Violence victims (Apr - Aug 05 + 06)	220	271	23%	1.0	1.2	21.2%	-10%
11	Reduce domestic burglary	640	640	0%	7.0	6.8	-2.7%	-15%
12	Reduce Vehicle Crime	2028	2434	20%	9.4	11.1	18.1%	-15%
13	Reduce recordable racist offences per 100,000 population	100	213	113%	46.4	97.2	109.6%	-15%
15	Reduce the supply of illegal drugs to communities in MK	120	46	-62%	0.6	0.2	-62.3%	Reduce