

# Milton Keynes Partnership

Activity Update for  
Milton Keynes Local Strategic Partnership  
14<sup>th</sup> January 2010

# January 2010 Summary

- Economy & Employment
- Physical Infrastructure
- Community Infrastructure
- Homes
- New Initiatives

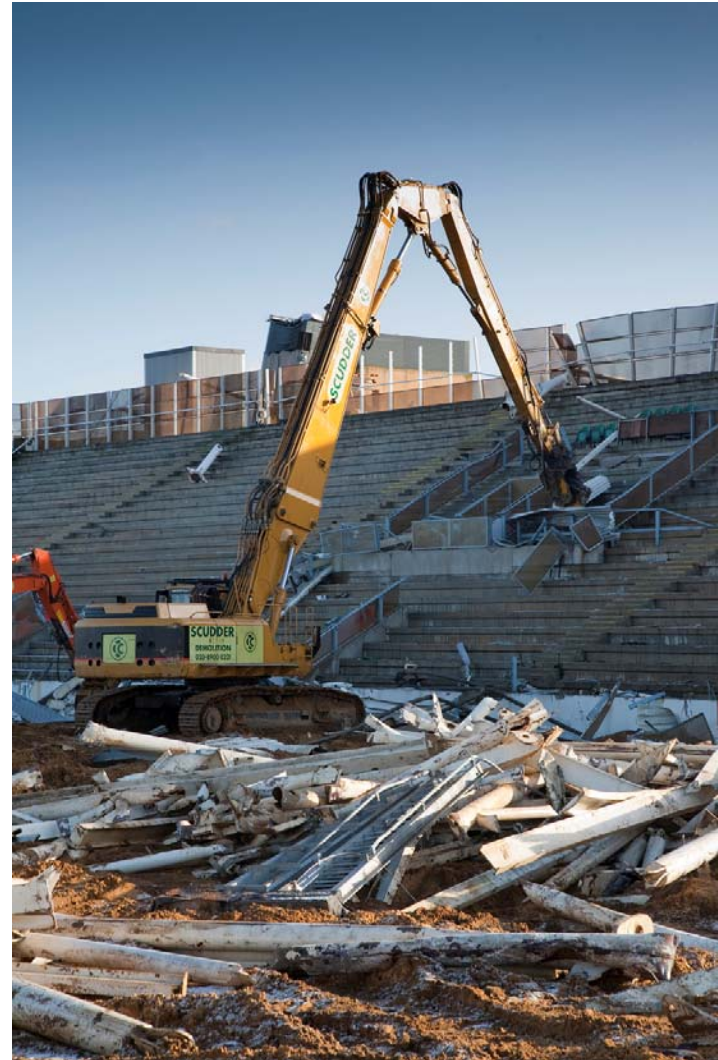
# 2009/10 Economy & Employment

- Luminous completed and open
- The Pinnacle opens
- John Lewis moves into Nova
- River Island on site
- Inward Investment enquiries 9% ahead of last year
- 305 new jobs so far this year



# 2009/10 Economy & Employment

- Network Rail established in CMK
- Site preparation underway
- Planning application with MKC



# 2009/10 Economy & Employment

- Domino's Training Centre/Warehouse nearing completion
- Unemployment at 4.7% - higher than the national rate
- Youth unemployment a major issue
- 30% seeking lower skilled employment



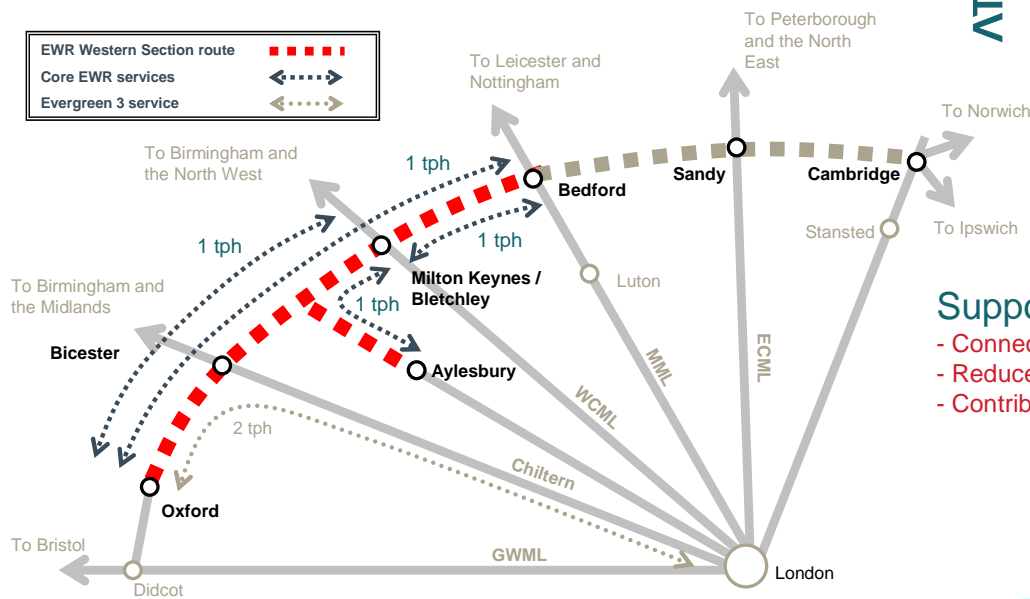
# 2009/10 Physical Infrastructure

- Wolverton Station improvements going ahead
- East West Rail – March Stakeholder Event planned

## First step towards an East-West rail arc

- Western Section - enables a core regional EWR service

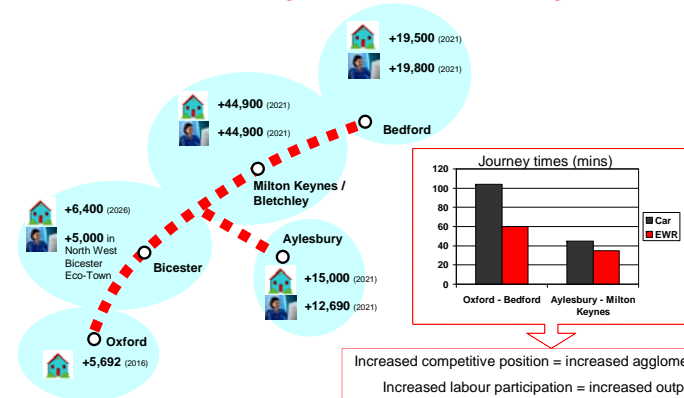
ATKINS



## Supporting Sustainable Regional Growth

- Connects key housing and employment growth areas
- Reduces the focus on the London commute
- Contributes to achieving sustainable economic growth

ATKINS



# 2009/10 Physical Infrastructure

- New buses for Service 300
- RTPI on test
- Fen Street on site
- Coachway – Spring
- 9 Electric Buses for MK



# 2009/10 Community Infrastructure

- Four Community Centres in the next two years
- Bletchley Leisure Centre - completed
- Temporary Surgery open in Broughton Gate
- C4.1 Centre opens 27<sup>th</sup> January





# 2009/10 Community Infrastructure

- Almost 100 new allotment plots commissioned
- Parks, Playing Fields & Open Space completion underway in older areas
- Historic buildings given new life in Shenley Church end
- MKP staff assist Walton High



# 2009/10 - Homes

## Housing Starts

Full Year Target – April 2009	638
Outturn at the half year – 30 Sept 09	533

## Housing Completions

Full Year Target – April 2009	1191
Outturn at the half year – 30 Sept 09	747

Likely to exceed completions target but fall short of last year's 1795 completions

## Meeting Housing Need

National Affordable Housing Programme, Kickstart  
Westcroft 16, Extra Care II

# 2009/10 – New Initiatives

- *THE WORLD CUP 2018 !!*
- ICT Strategy Commissioned
- Broadband/fibre optic testing
- Low Carbon Community Challenge bids
- Electric Vehicles
- Small Future Footprints



*Thank you*