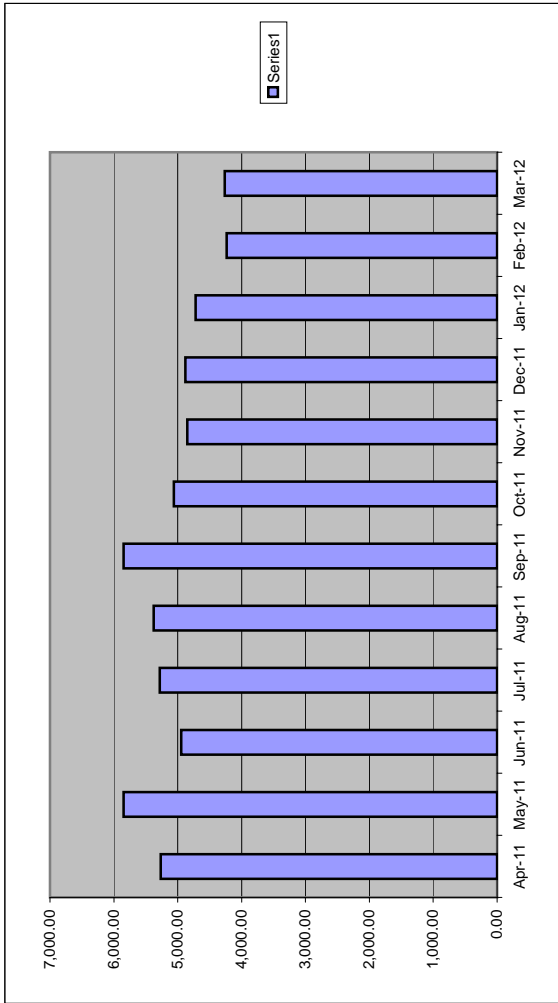


Archiving and Storage Actual Spend Analysis (2011 todate)

Apr-11	5,266.81
May-11	5,845.91
Jun-11	4,946.54
Jul-11	5,282.75
Aug-11	5,376.67
Sep-11	5,847.07
Oct-11	5,061.96
Nov-11	4,851.36
Dec-11	4,882.16
Jan-12	4,721.25
Feb-12	4,235.32
Mar-12	4,263.68

2011 Total 60,581.48



Apr-12	4,506.06
May-12	3,637.59
Jun-12	4,135.07
Jul-12	3,617.21
Aug-12	3,582.03
Sep-12	4,169.07
Oct-12	4,164.85
Nov-12	4,407.02

2012 Total 32,218.90

