



## **SaferMK Performance Report for RAG**

**March 2013**

This report has been collated before oversight by the SaferMK Performance Group.

All data has been collected from partner agencies.

### Crime data

Crime Type	Per 1,000 pop	Change YTD	Monthly Direction	Previous Month	Current Month
All crime	66.9	-8.42%	↓	1544	1427
Serious Acquisitive Crime	10.73	-5.47%	↓	227	221

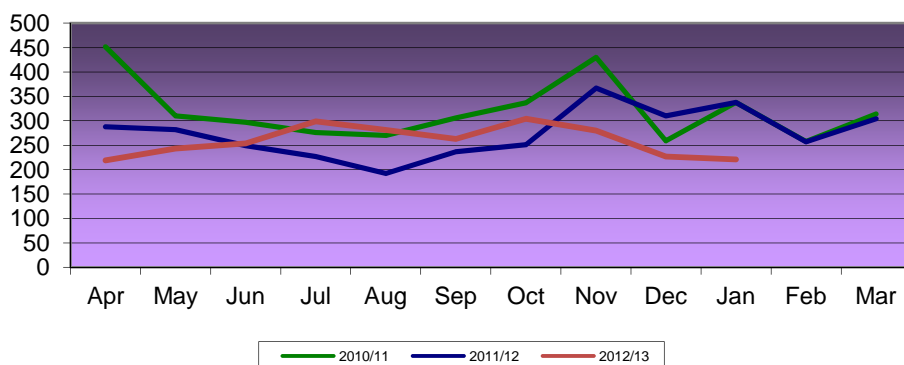
### All crime

All crime continues to fall, with the January 2013 figure of 1427 the lowest level in the 3 year reporting period.

### SAC

Similarly, SAC has steadily decreased since the anticipated seasonal peak of the October/November period. However, it should be noted that SAC has defied the general patters of the previous 2 years, with a reduced tendency towards fluctuations compared to 2011 and 2012, which were characterised by peaks/ troughs. 2012 was the first year in which SAC declined between October and December. The January 2013 figure of 221 is only marginally higher than the 12 month low of 219 recorded in April.

### Serious Aquisitive Crime



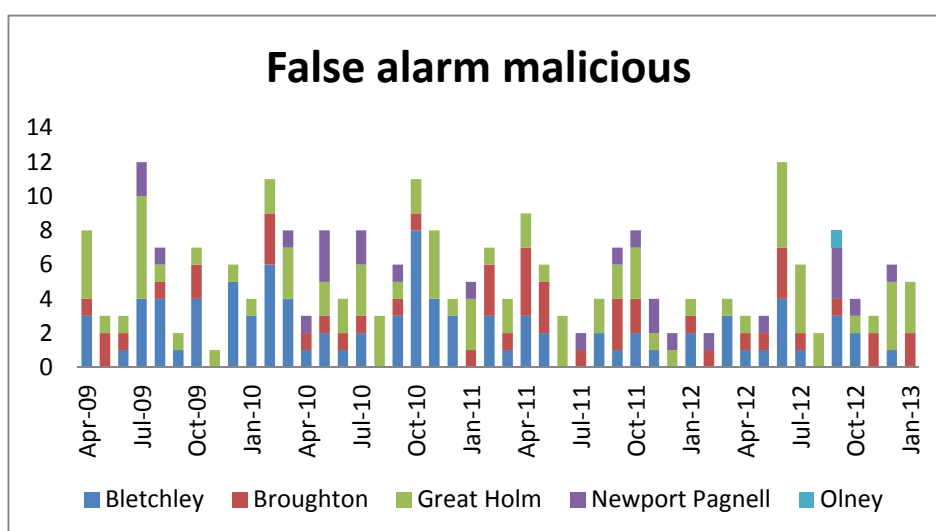
### Deliberate Fire Data

Bucks Fire and Rescue Service is currently amending their data collection system, with a view to installing new mapping software in the immediate future. This system will use altered and enlarged boundaries to those referred to in previous Performance Group reports. The following provisional data is based on this new system, and will therefore not be directly comparable with previous data. Incidents are recorded, based on the 5 station grounds within Milton Keynes (Great Holm, Bletchley, Broughton, Newport Pagnell and Olney). It is hoped that a consistent reporting mechanism will be in place in the following weeks.

Deliberate Primary fires increased between December and January. This increase is distorted somewhat by the particularly low levels recorded in December. January's figure of 7 deliberate primary fires was well below the average for the previous 12 months, of 9.6 fires. Similarly, secondary fires have remained at the lowest level in a year during December and January.

Deliberate Fire	Current Months Figure - January	Previous Months Figure – December	Month on month Change
Primary	7	3	133.33%
Secondary	6	6	0%
FAM	5	6	16.7%

The table below shows False Alarm Malicious (FAM) incidents since April 2009, broken down by Milton Keynes’ 5 station grounds. For Milton Keynes as a whole FAM has experienced a slight reduction compared with the previous month. During December and January Great Holm station ground has been disproportionately represented in these figures, with 4 of the 6 incidents of FAM during December, and 3 of the 5 incidents in January. FAM has not been a particular issue in Great Holm in the immediately preceding months. These recent figure may therefore be merely an anomaly. However, this issue is perhaps worth monitoring, as persistent FAM tends to be a reliable proxy indicator of upcoming ASB issues.



**Hate Crime**

	Total Hate Crime	Racist	Disabilist	Faith related	Homophobic	Transphobic
Number recorded	24	18	2	3	0	0
Month on month	↑	↑	↓	↑	↓	↓
% change	41.2%	50%	-33.3%	200%	-100%	-100%

Hate crime experienced a sudden increase during January, following the all time low recorded level of December 2012. These increases are mainly accounted for by a 50% increase in reports of Racist incidents, as well as an additional 2 reports of Faith related Hate Crimes. Reports of Faith Related incidents remained at 0 between September and November.

## Tackling domestic violence

### Targets

- Reduction of repeat incidents
- Promote early identification of domestic violence cases and provide quality interventions to the victims, perpetrators and families affected.

### Methods

- Intensive support to high risk and medium risk victims
- Complete gap analysis of current interventions
- Provide early intervention and risk assessment with all domestic violence referrals
- Develop and maintain community perpetrator programmes
- Monitor repeat incidents of domestic violence to consider patterns
- Assess effectiveness of interventions
- Share lessons learnt from reviews to provide education and awareness raising

### Main achievements

1.	Standing Together- support to and review of DSVDG as part of co ordinated community response around the country. Completed 2-4 <sup>th</sup> July. Report now available
2.	Health representation on the delivery group now through Bev Shaw, Interim Senior Manager and Professional lead for Health Visiting, School Nursing and Family Nurse partnerships
3.	Education representation on the delivery group-Sarah Pyke, Head of Behavioural Support, Children and Families.
4.	OU research proposal for gap analysis

### High Risk MARAC Cases (cumulative)

	Apr-12	May-12	Jun-12	Jul-12	Aug-12	Sep-12	Oct-12	Nov-12	Dec-12	Jan-13	Feb-13	Mar-13
No of cases reviewed	16	18	21	16	17	21	14	19	23	15		
Repeat cases	0	4	2	7	3	2	3	3	7	5		
Repeat Rate <sup>1</sup>	0%	11.8%	10.9%	18.3%	18.2%	16.5%	17.0%	16.9%	18.7%	20%		
Previous repeat rate	22.2%	17.5%	16.7%	20.3%	23.1%	21.9%	20.7%	20.9%	22.7%	23.2%	23.3%	21.6%

### All repeat incidents (cumulative)

	Apr-12	May-12	Jun-12	Jul-12	Aug-12	Sep-12	Oct-12	Nov-12	Dec-12	Jan-13	Feb-13	Mar-13
Total no of incidents	461	506	500	551	511	502	407	498	489	501		
Repeat cases	207	236	228	252	241	228	180	245	212	226		
Repeat Rate	44.9%	45.8%	45.7%	45.7%	46.0%	45.9%	45.7%	46.2%	45.9	45.8%		
Previous repeat rate	47.6%	45%	46.1%	46%	44.8%	45.4%	45.2%	45.4%	45.5%	45.3%	44.3%	44.5%

<sup>1</sup> The colour denotes this year's repeat rate against the previous year.

15 cases were referred to MARAC during January 2012, 5 of which were repeat cases. This month on month reduction was anticipated, following the seasonal peaks of the November/December period. Despite this reduction, January 2013 had the highest repeat rate recorded during the current year.

Performance Indicators	Q1 2011/12
<b>Total number of Child Protection conferences audited during the period</b>	25
<b>% of the above that have the following parental factors flagged:</b>	
Domestic abuse: absent parent	40%
Domestic abuse: parent's current partner	8%
Domestic abuse: parent	8%
Mental health: parent	24%
Mental health: absent parent	4%
Alcohol misuse: parent	12%
Drug misuse: parent	24%
Drug misuse: parent's current partner	4%

The above Performance Indicators table looks specifically at child protection conference and the number where DV has been flagged as a concern. The most recent available figures are for the first quarter of 2012.

## Tackling drug and alcohol misuse

### Targets

- Increase the numbers of adults and young people into treatment and recovery services
- Increase the numbers of adults and young people successfully completing treatment

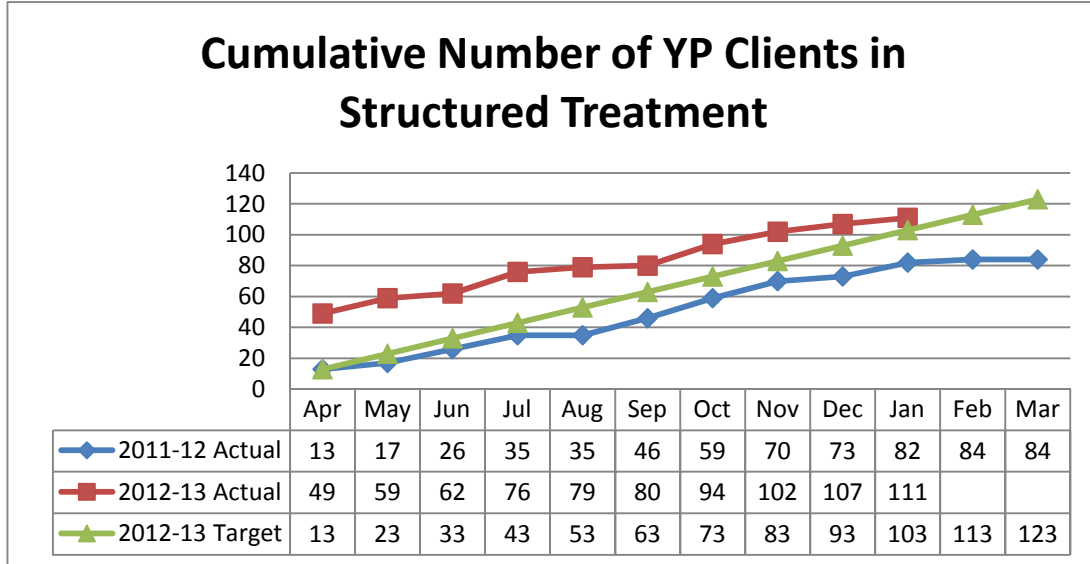
### Methods

- Maintain and develop intensive and timely support and treatment programmes for adults and children
- Disrupt supply of Class A drugs
- Promote responsible drinking
- Education and awareness raising

Main achievements	
1.	YP treatment services have hit their target for the number of young people in treatment.
2.	HMP Woodhill recovery focused substance misuse services tender is now complete. Contract has been awarded to (WDP) Westminster Drug Project. The service is due to start 1 <sup>st</sup> Oct 12.
3.	Both CRI and Compass has undertaken events to raise awareness of their services plus raise awareness of substance misuse.
4.	CRI developing the hub and spoke model of delivery in local neighbourhoods
5.	12 month review completed. New stretch targets agreed.
6.	Thames Valley Police have commissioned a new Custody Interventions Programme in MK Custody Suite

**Drug and Alcohol Misuse: Young people**

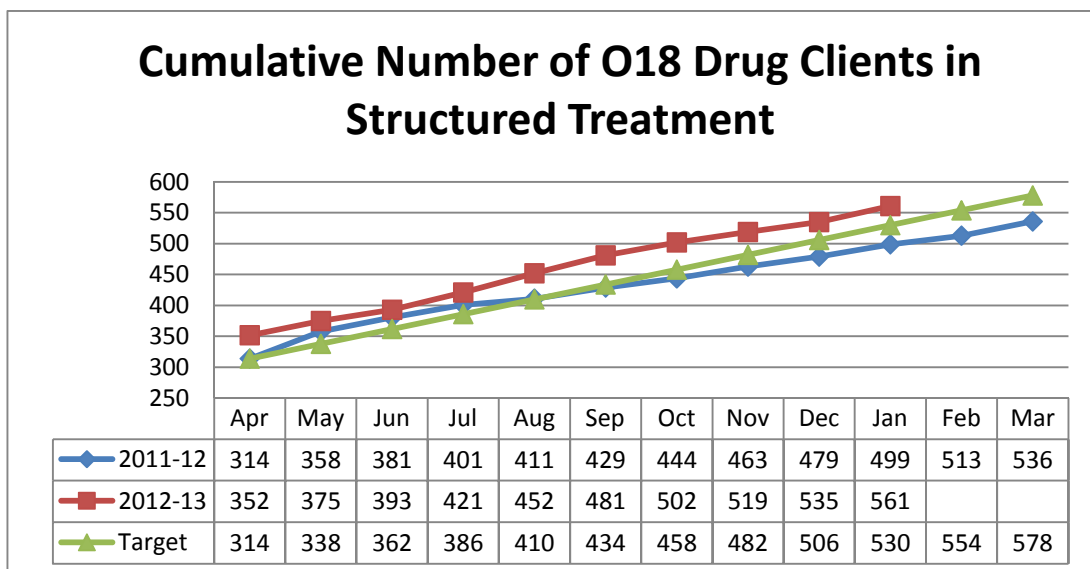
The below chart looks at the number of young people in structured treatment, which includes both drugs and alcohol. Throughout the year the numbers of young people in structured treatment have continued to exceed the target. Of the young people in structured treatment, 81% are in drug treatment. This proportion has remained consistent with a range between 79% and 81% for 2012.

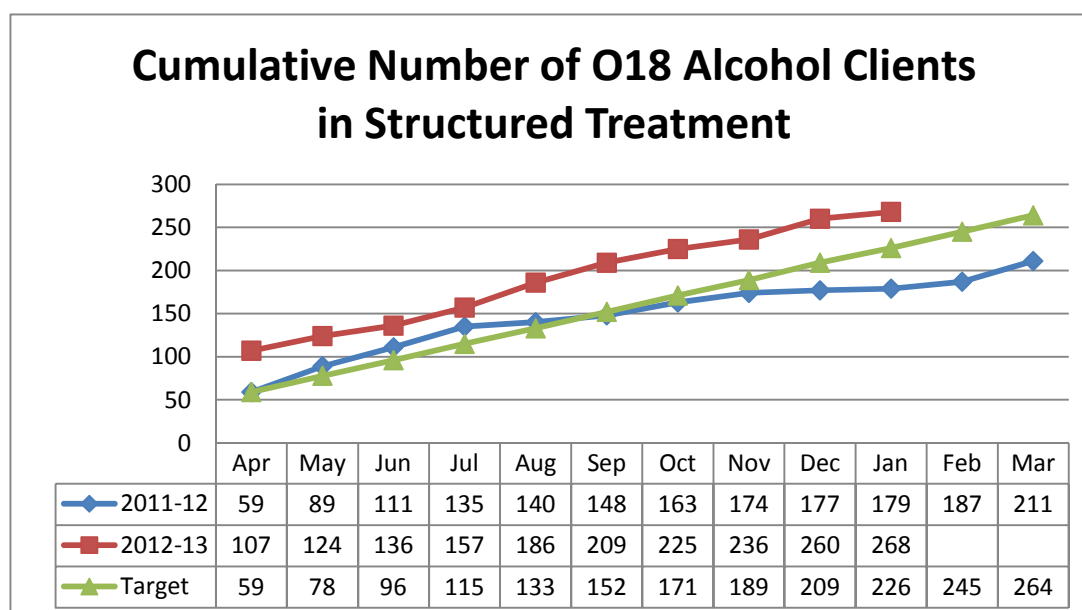


**Drug and Alcohol Misuse: Adults**

2012 continues to produce positive results for both alcohol and drug adult treatment. The number of clients in structured treatment for both areas continues to exceed the approximate targets for each month.

Please note that the monthly figures are for clients in structured treatment. However, the target is for clients in effective treatment. It is estimated that 90% of the structured clients are in effective treatment.





#### Completion of Structured Treatment

January's figure for the proportion of young people completing structured treatment is close to the 2012/2013 average of 78%. However, successful completion rates for adults in structured treatment have been steadily declining, with the current month at 0%. The target for the level of adult successful completion has only been reached once since 2011.

Young People: % of successful completions from structured treatment												
Year	Apr	May	Jun	Jul	Aug	Sep	Oct	Nov	Dec	Jan	Feb	Mar
2011-12	100%	50%	88%	93%	88%	89%	86%	87%	82%	81%	80%	78%
2012-13	91%	78%	74%	73%	78%	78%	79%	79%	77%	77%		

Adults: % of successful completions from structured treatment												
Year	Apr	May	Jun	Jul	Aug	Sep	Oct	Nov	Dec	Jan	Feb	Mar
2011-12	0%	29%	29%	33%	29%	34%	34%	35%	35%	33%	32%	31%
2012-13	50%	45%	43%	46%	40%	42%	37%	37%	35%	0%		
Target	48%	48%	48%	48%	48%	48%	48%	48%	48%	48%	48%	48%

## Tackling anti-social behaviour

### Targets

- Reduce Anti-Social Behaviour
- Increase customer satisfaction of multi-agency approach to anti-social behaviour

### Methods

- Establishing a clear definition, risk assessments and procedures
- Unify data collection, analysis and case recording
- Establish hub management of serious ASB
- Maintain and develop intensive support for vulnerable victims/witnesses
- Training and education across all agencies and sections of the community

### Main achievements

1.	The ASB case management is new and running well with appropriate member representation.
2.	Partners are in agreement with progressing the pro-social approach.
3.	Both TVP and Council recorded ASB data are now available again

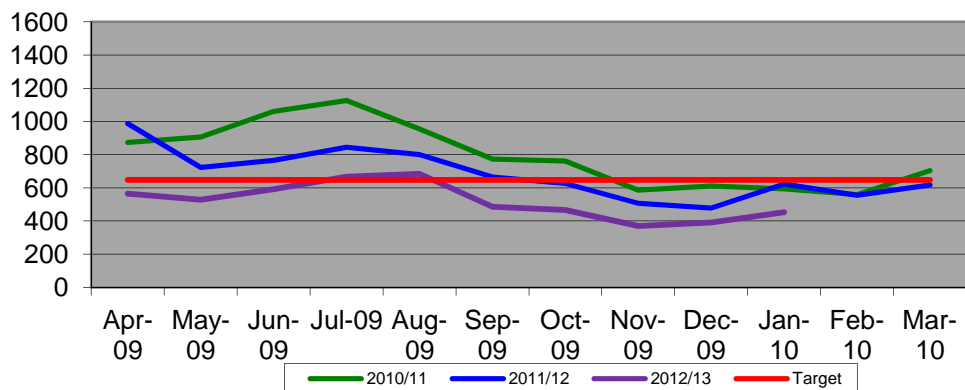
	TVP Reports	MKC Reports	Combined Reports
Current Month - January	453	482	935
Month on month	15.86%	16.43%	16.15%

Both TVP and Council recorded ASB data are once again available.

In the time that Police ASB has been unavailable, there have been declines during the September to October period. However, since December Police recorded ASB has gradually increased, bringing the January's figure to roughly the level prior to these reductions. It should be noted that because this system is based on new categories, no meaningful year on year comparisons can be made.

Council recorded ASB has also experienced an increase between December and January. During February the council decided to begin charging for the removal of bulky waste. A sharp increase in the Fly-capturing component of the ASB category is therefore expected in the coming months.

**Police Recorded ASB**





## Reducing re-offending

### Targets

- Significantly reduce re-offending by persistent offenders
- Rehabilitate and reintegrate young and adult offenders into communities

### Methods

- Maintain joint working through the Integrated Offender Management Team - working intensively with persistent offenders
- Support the work of the Youth Offending Team and Children and Young People's Services in preventing and tackling offending behaviour
- Support vulnerable adults to prevent offending behaviour
- Assist persistent offenders in accessing appropriate and suitable accommodation
- Assist offenders in gaining training, education and employment persistent offenders
- Assist offenders in receiving treatment to reduce and abstain substance misuse including drugs and alcohol

The below table looks at individuals enrolled in the Integrated Offender Management scheme. The scheme aids agencies to act in partnership in order to address those offenders who cause the most harm and damage within the community. This data is provided quarterly, with the most recent period covering the October – December period. This most recent quarter has experienced lower levels of success compared with the first part of the year. However, year to date the scheme has made savings of £34,873.

Integrated Offender Management Scheme 2012/ 2013				
	Q1 (April – June)	Q2 (July – Sept)	Q3 (Oct – Dec)	YTD
<b>Number on the scheme</b>	30	23	27	80

\* Please note we will be exploring how best we report on IOM data in the future

Main achievements	
1.	Project agreed with the Christian Foundation to work with 18-24 yr olds offenders – high risk if re-offending/high needs group
2.	Probation/P3 Court Linkworker Scheme commenced in 18 June 2012.

## CONTEST

### Targets

- Respond to the ideological challenge of terrorism and the threat we face from those who promote it
- Prevent people from being drawn into terrorism and ensure that they are given appropriate advice and support
- Work with sectors and institutions where there are risks of radicalisation which we need to address

### Methods

- 100 representatives from partner organisations trained in Cultural Awareness Training
- 30 representatives from partner organisations receive WRAP training and are therefore able to identify those who may be being drawn into terrorism
- 
- Restructure the Channel Board (formally the SVI) and ensure it is fit for purpose
- Initiate training programme for panel members to ensure their understanding of the purpose of Channel
- Develop a training programme to raise awareness of Channel and the referral mechanism for statutory and voluntary organisations .
- Organisation approached and recruited onto the new Tensions Panel
- Reporting mechanism developed.

### Main achievements

1.	Tensions report finalised and ready for dissemination.
2.	2 Supplementary schools have achieved the Bronze Award in the Quality Framework for Supplementary Schools

Output measure	Numbers
100 representatives from partner organisations trained in Cultural Awareness Training	<b>Sessions have started</b>
30 representatives from partner organisations receive WRAP training	<b>35</b>

### Further data in discussion