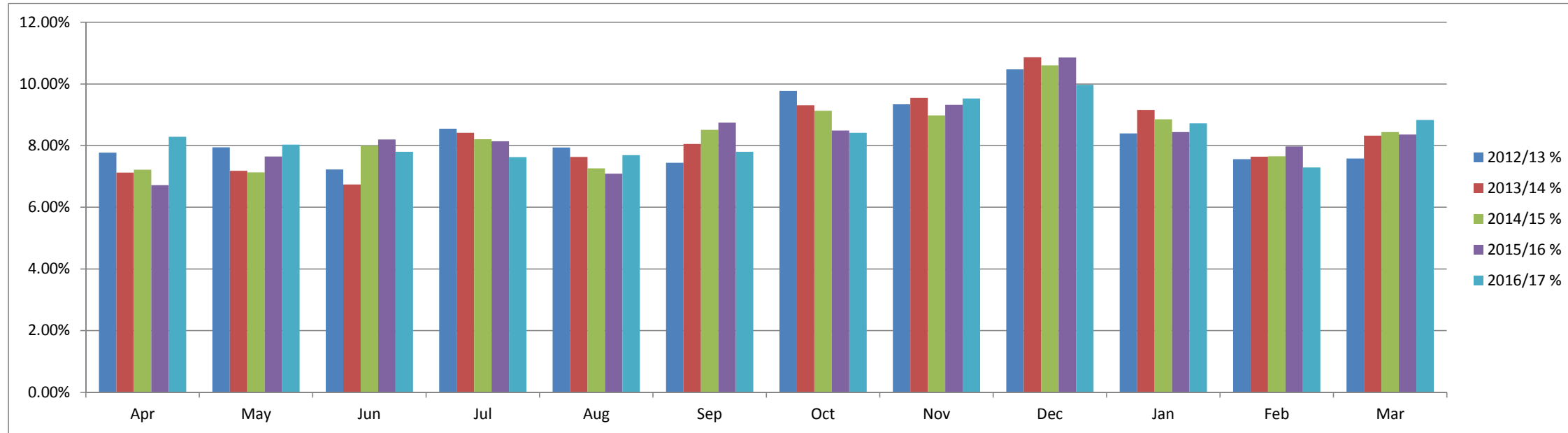


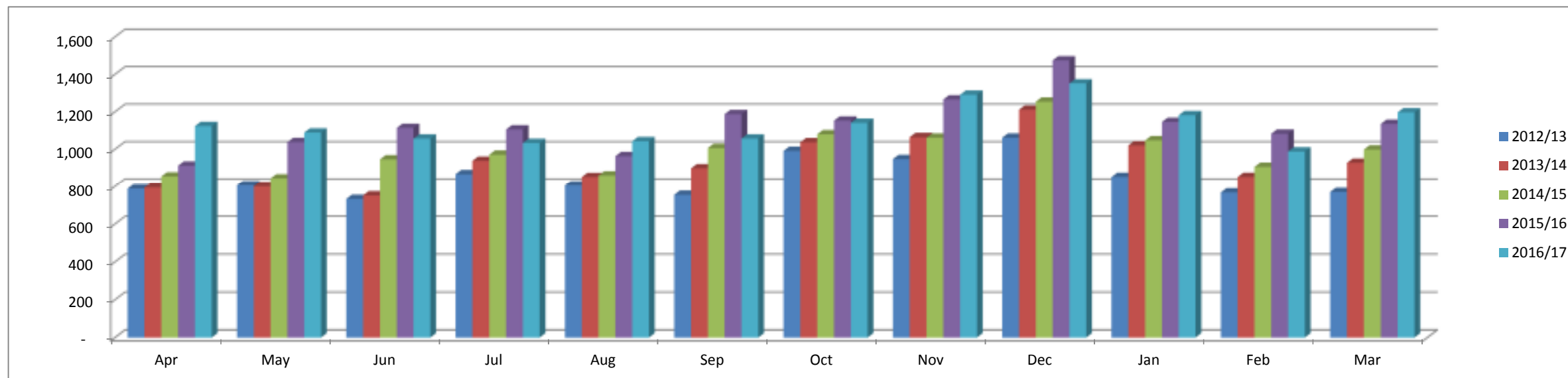
**Appendix A**

This data shows the % of all car parking income received on a month by month basis for the last 5 years.  
 The first table and chart show this on a percentage basis while the lower table and chart show this in cash terms

	Apr	May	Jun	Jul	Aug	Sep	Oct	Nov	Dec	Jan	Feb	Mar	Total
<b>2012/13 %</b>	7.77%	7.95%	7.22%	8.55%	7.94%	7.44%	9.78%	9.34%	10.47%	8.40%	7.56%	7.59%	<b>100.00%</b>
<b>2013/14 %</b>	7.13%	7.18%	6.74%	8.42%	7.64%	8.06%	9.31%	9.55%	10.87%	9.16%	7.64%	8.32%	<b>100.00%</b>
<b>2014/15 %</b>	7.22%	7.13%	7.99%	8.21%	7.26%	8.51%	9.13%	8.98%	10.60%	8.86%	7.66%	8.44%	<b>100.00%</b>
<b>2015/16 %</b>	6.72%	7.64%	8.20%	8.14%	7.09%	8.75%	8.49%	9.32%	10.86%	8.44%	7.98%	8.36%	<b>100.00%</b>
<b>2016/17 %</b>	8.29%	8.03%	7.80%	7.62%	7.69%	7.80%	8.42%	9.53%	9.97%	8.72%	7.29%	8.83%	<b>100.00%</b>



	£'000 Apr	£'000 May	£'000 Jun	£'000 Jul	£'000 Aug	£'000 Sep	£'000 Oct	£'000 Nov	£'000 Dec	£'000 Jan	£'000 Feb	£'000 Mar	£'000 Total
<b>2012/13</b>	788	805	732	866	805	754	991	947	1,061	851	767	769	<b>10,137</b>
<b>2013/14</b>	794	800	751	938	851	897	1,037	1,064	1,211	1,020	851	927	<b>11,142</b>
<b>2014/15</b>	854	843	945	970	859	1,006	1,079	1,062	1,254	1,047	905	998	<b>11,824</b>
<b>2015/16</b>	912	1,038	1,114	1,105	963	1,187	1,153	1,266	1,474	1,145	1,083	1,135	<b>13,574</b>
<b>2016/17</b>	1,123	1,089	1,057	1,033	1,043	1,057	1,141	1,291	1,351	1,182	988	1,197	<b>13,550</b>

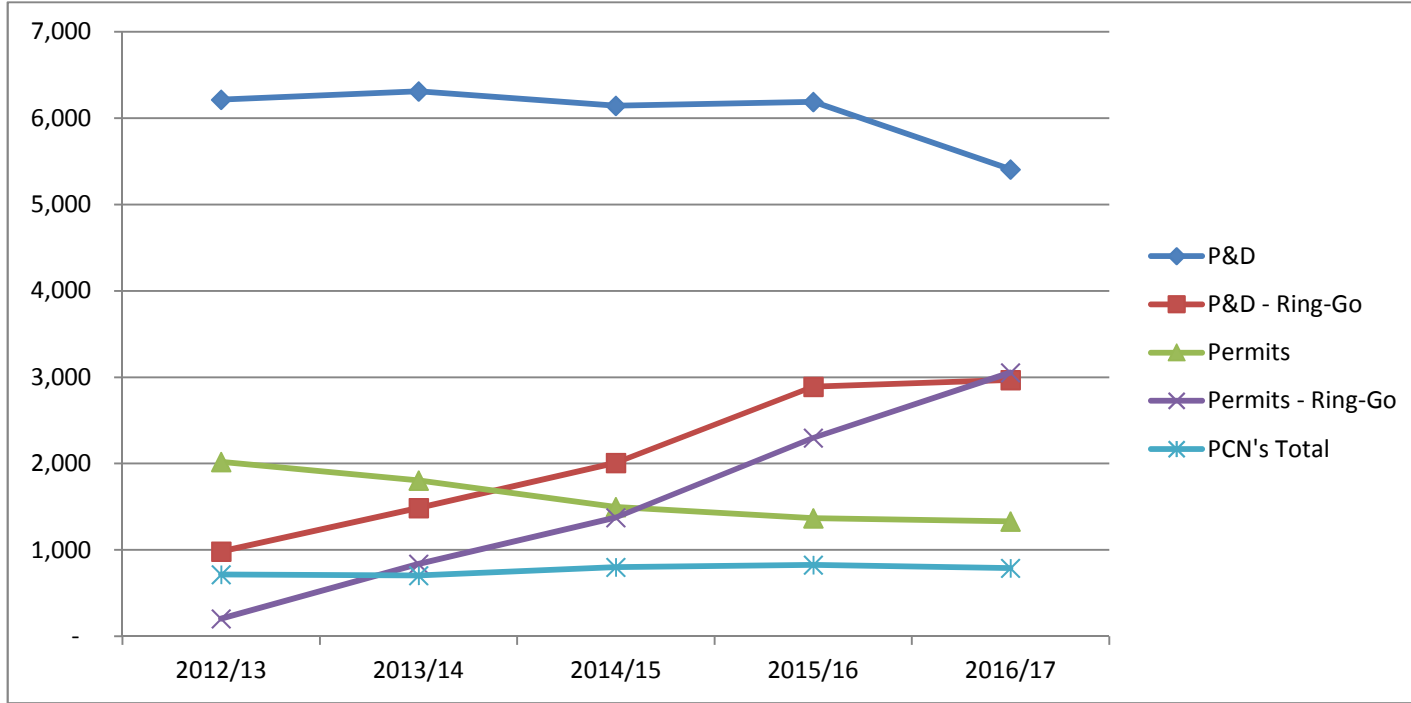


**Appendix B**

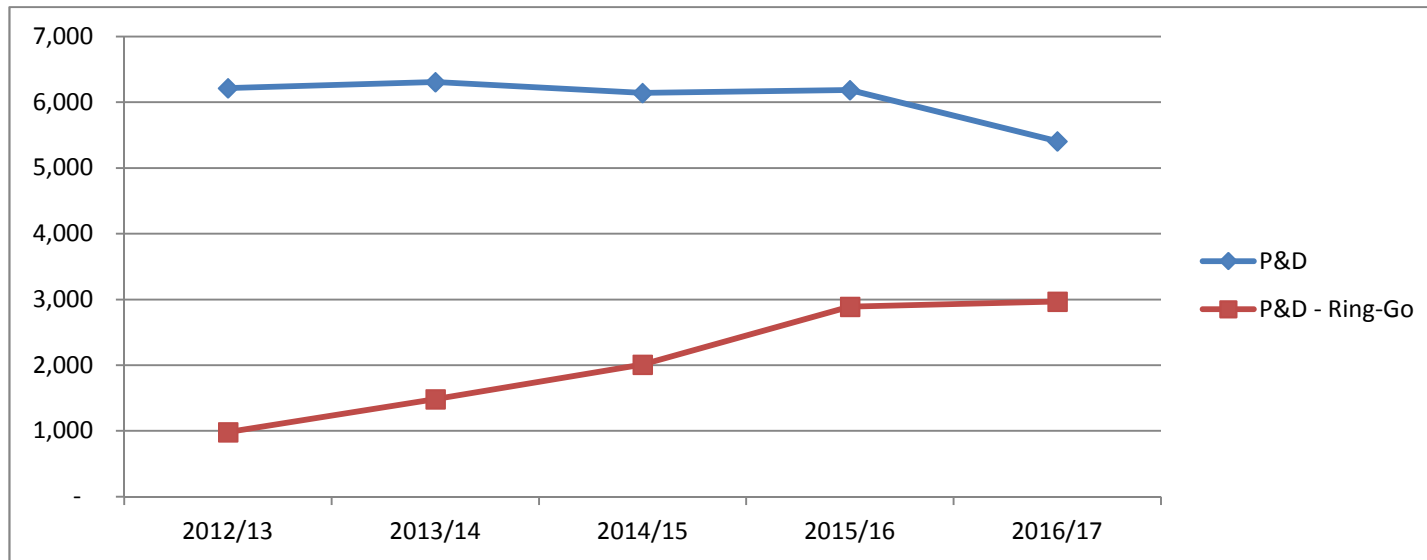
This data in the initial tables and charts shows the split in all car parking income either via Ring-Go (cashless) or cash/on line via Indigo on an income value basis

	£'000 2012/13	£'000 2013/14	£'000 2014/15	£'000 2015/16	£'000 2016/17
<b>P&amp;D</b>	6,213	6,309	6,142	6,186	5,406
<b>P&amp;D - Ring-Go</b>	983	1,486	2,010	2,890	2,970
<b>Permits</b>	2,021	1,804	1,496	1,370	1,330
<b>Permits - Ring-Go</b>	205	838	1,376	2,299	3,052
<b>PCN's Total</b>	715	704	800	829	792
<b>Income Total</b>	<b>10,137</b>	<b>11,142</b>	<b>11,824</b>	<b>13,574</b>	<b>13,550</b>

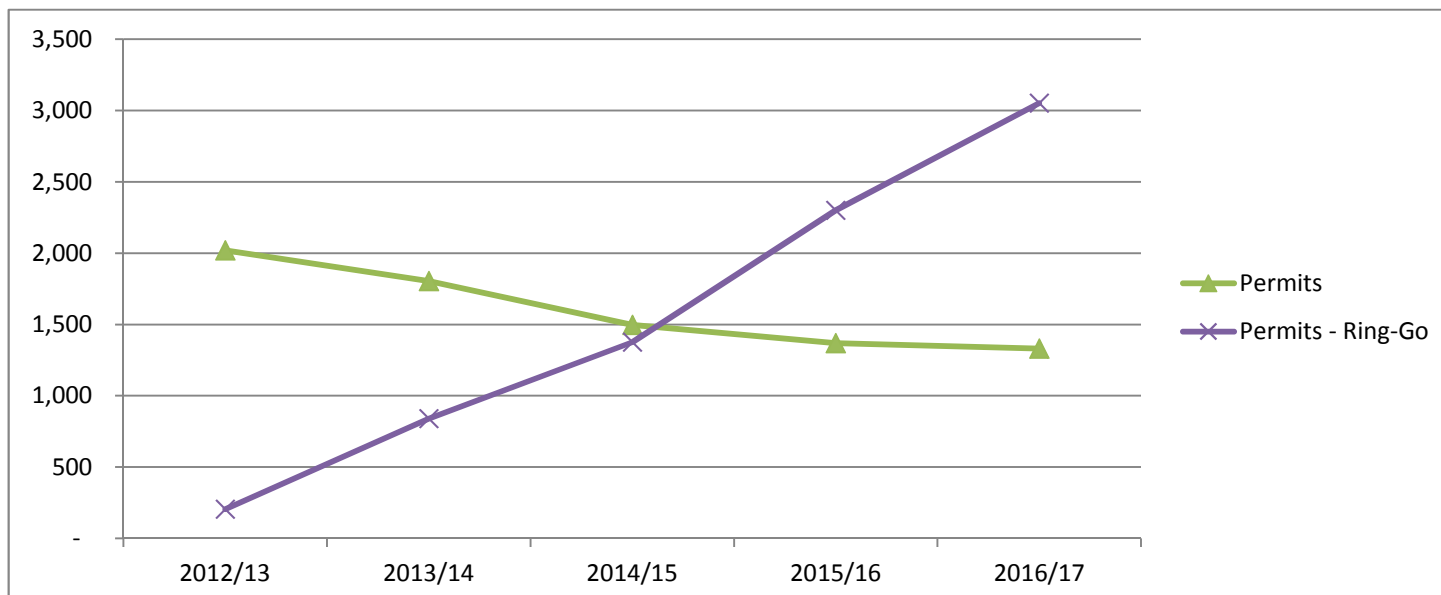
**All Income £**



**Pay and Display Income £**



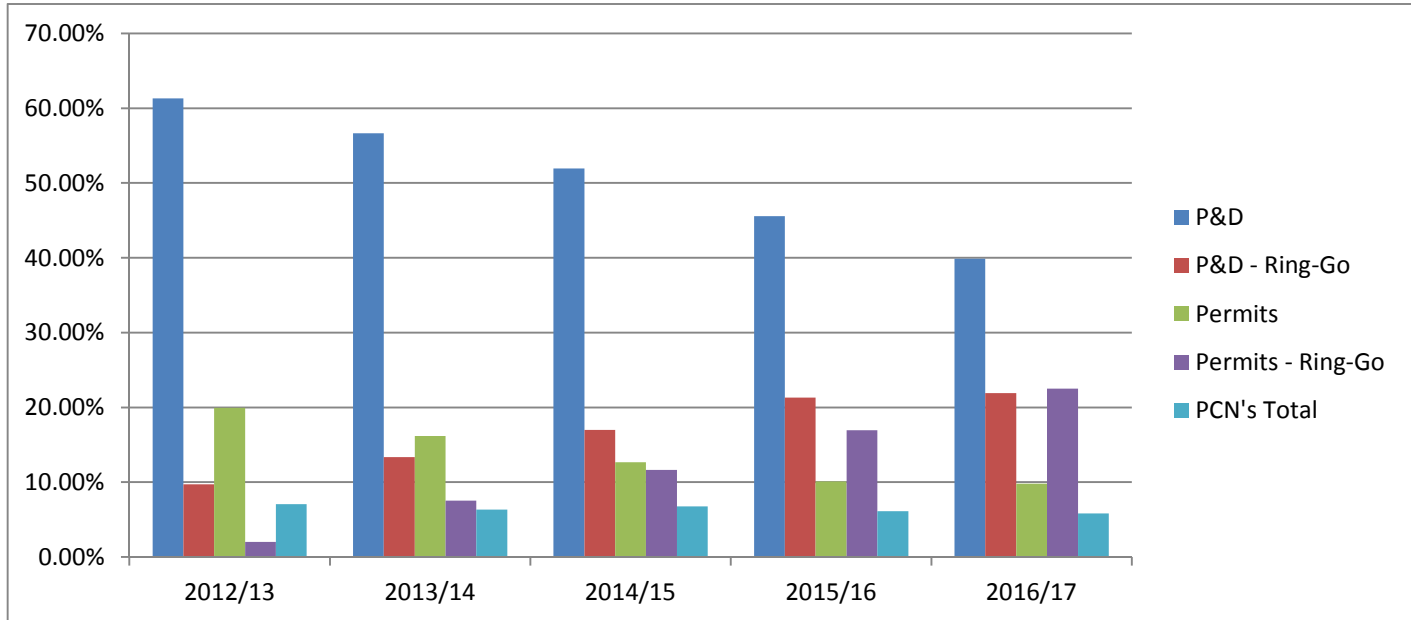
**Permit Income £**



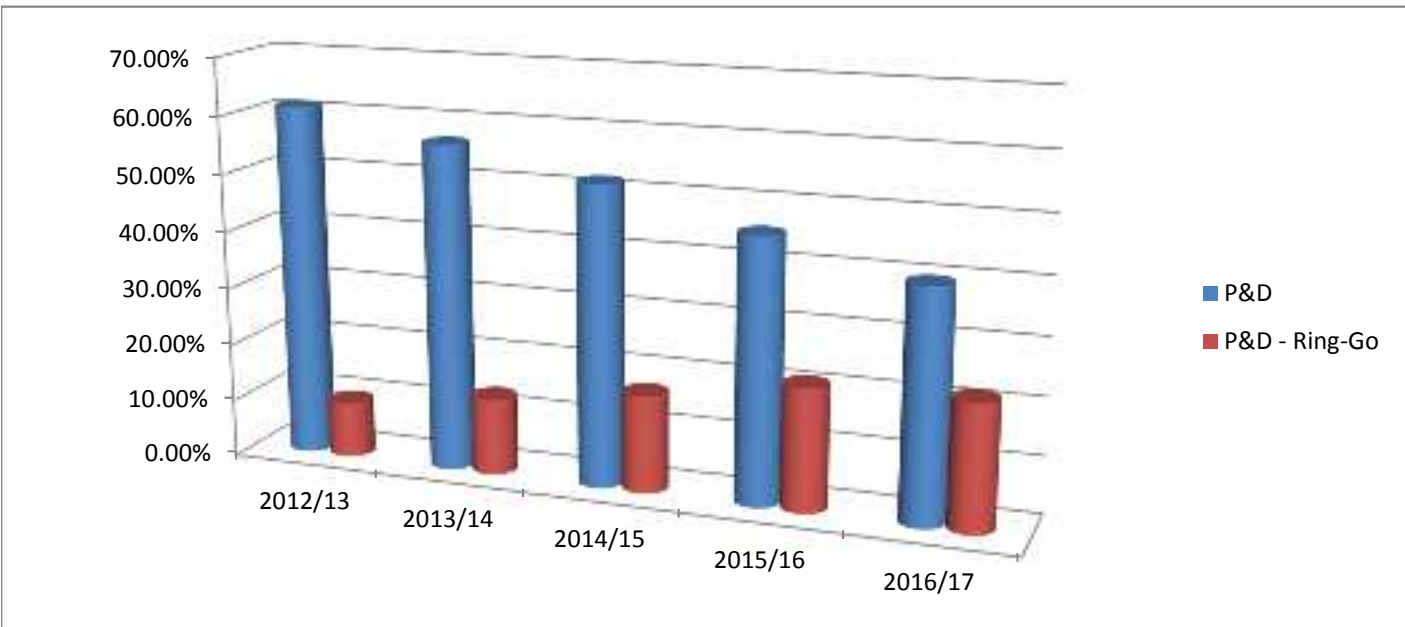
The data in the next tables and charts shows the split in all car parking income either via Ring-Go (cashless) or cash/on line via Indigo on a percentage basis

	2012/13	2013/14	2014/15	2015/16	2016/17
<b>P&amp;D</b>	61.29%	56.63%	51.95%	45.58%	39.90%
<b>P&amp;D - Ring-Go</b>	9.70%	13.34%	17.00%	21.29%	21.92%
<b>Permits</b>	19.93%	16.19%	12.65%	10.09%	9.82%
<b>Permits - Ring-Go</b>	2.02%	7.52%	11.63%	16.94%	22.52%
<b>PCN's Total</b>	7.05%	6.32%	6.76%	6.10%	5.84%
<b>Income Total</b>	<b>100.00%</b>	<b>100.00%</b>	<b>100.00%</b>	<b>100.00%</b>	<b>100.00%</b>

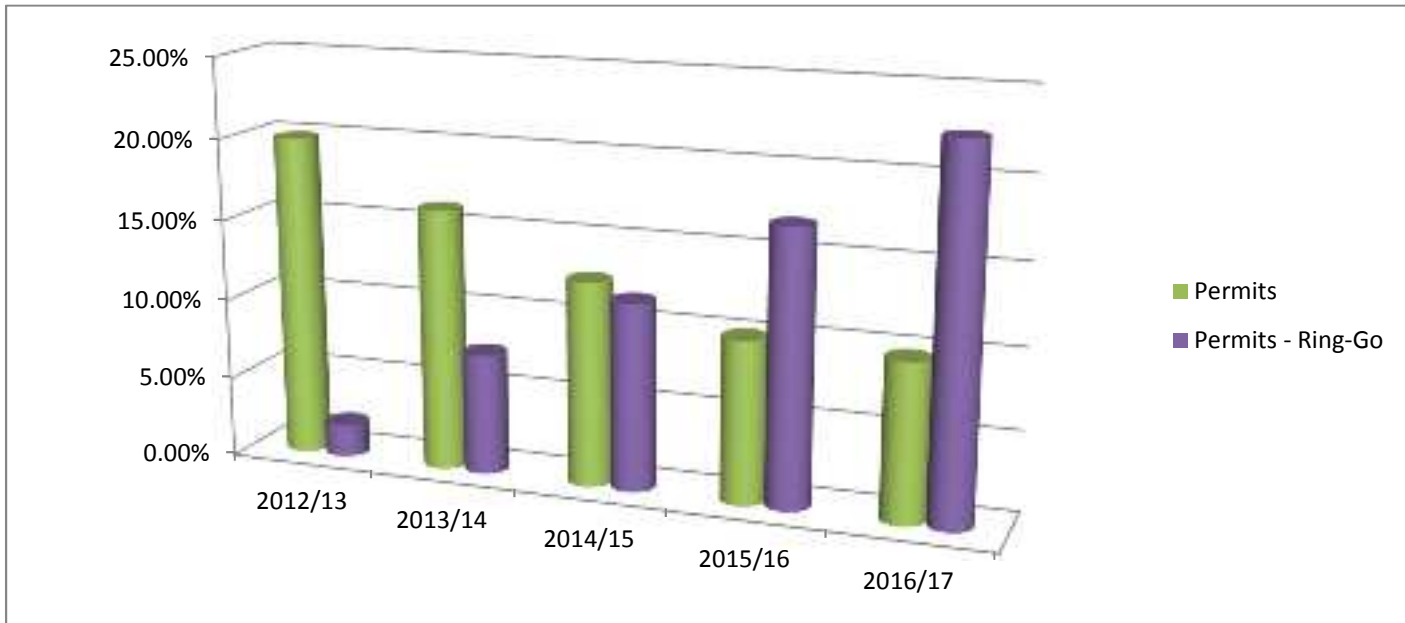
**All Income %**



**Pay and Display Income %**



**Permit Income %**



The following data breakdown the Pay and Display income into premium, standard and long stay. It also splits out the permit income into employee, green and car share.

Income figures from Si-dem, RingGi and P&D cash collection

Table 5	Financial Year	Premium Rate (per hour)	Premium Rate Income Collected	Premium Rate Hours Sold Per Annum	Standard Rate (per hour)	Standard Rate Income Collected	Standard Rate Hours Sold Per Annum	Commuter Long Stay (per day)	Commuter Long Stay Income	No of Days Sold Per Annum	MK Resident Long Stay (per day)	Resident LS Income	Residents LS Users Per Annum	Employee permit (per day / month / year)	Income from Employee permits	No of spaces sold Per Annum	Green Permit (costs per annum)	Income from Green Permits	No of Green Permits Per Annum	Car Share (per person per annum)	Income from Car Share Permits	No of Car Share Users Per Annum
	2012/13	£1.20	£4,488,228	3,740,190	£0.30	£2,526,891	8,422,969	£8	£165,610	20,701	£4	£87,722	21,931	£1.20 / £22.50 / £270	£1,850,551	1,542,126	£75	£75,025	1,000	£30	49090	1,636
	2013/14	£1.40	£4,876,187	3,482,991	£0.40	£2,779,507	6,948,768	£8	£153,807	19,226	£4	£95,505	23,876	£1.60 / £30 / £360	£2,491,667	1,557,292	£75	£69,450	926	£30	60120	2,004
	2014/15	£2	£5,149,580	2,574,790	£0.50	£2,845,244	5,690,487	£8	£156,649	19,581	£4	£101,095	25,274	£1.60 / £30 / £360	£2,768,756	1,730,473	£75	£68,515	914	£30	62685.4	2,090
	2015/16	£2	£5,655,480	2,827,740	£0.50	£3,240,481	6,480,963	£10	£161,611	16,161	£5	£130,665	26,133	£2 / £37.50 / £450	£3,458,422	1,729,211	£75	£86,435	1,152	£30	59710	1,990
	2016/17	£2	£5,164,028	2,582,014	£0.50	£3,084,739	6,169,479	£10	£127,860	12,786	£5	£129,970	25,994	£2.40 / £45 / £540	£4,098,833	1,707,847	£75	£97,744	1,303	£30	61675	2,056

