

2016 Strategic Assessment Overview

Steve Conway – Senior Community Safety Analyst

SaferMK Partnership

7th July 2016

Background

- Changes in Reporting systems for several partners
- Reorganisation of Probation
- 2016: Strategic Assessment on priority and statutory areas

- Next 12 months analytical reports:
 - Reoffending
 - Perceptions of Crime

Demographics

- Rapidly growing population: 25% increase between 2002 and 2016
- Projected MK population for 2026 is 309,400
- BME population: 26% compared with 20% for England
- Average age of MK resident is 35, compared with 39 for England.

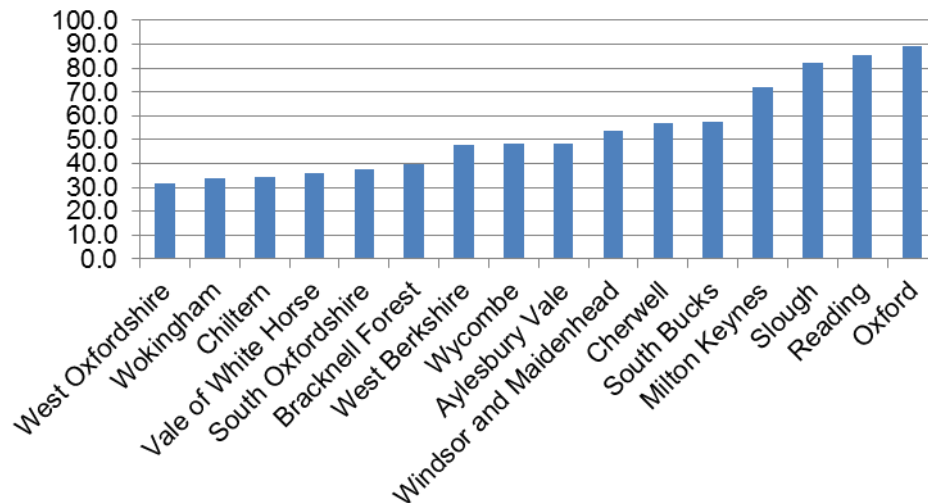
Crime: The National Picture

- Police recorded crime increased by 7%:
4.4 million offences
- Rise in police recorded crimes largely due to 27% rise in VAP, largely due to changes in recording practices.
- 29% increase in reports of Sexual Offences
- However, thought to relate to greater confidence: CSEW recorded stable levels, with many historical reports.

Crime: The Local Picture

- MK All Crime – stable between 2014/15 and 15/16: 1% rise (284 crimes)
- However, MK has experienced continued population growth: 72.2 crimes per 1000 residents for 2015/16
- Within Thames Valley: MK 4th per 1000 residents

All Crimes per 1000 Residents: Thames Valley 2015/16



Top 25 Estates per 1000

- Numerically – large Populations and high streets
- Per 1000 residents 2 omissions:
 - CMK
 - Populations <1000
- Eaglestone: Hospital
- Patterns closely mirror Wider MK – increased frequency

| Rank | Estate | Crimes per 1000 |
|------|-----------------------|-----------------|
| 1 | Stacy Bushes | 163.0 |
| 2 | Leadenhall | 161.0 |
| 3 | Eaglestone | 137.6 |
| 4 | Fenny Stratford | 134.1 |
| 5 | Tinkers Bridge | 128.6 |
| 6 | Coffee Hall | 123.2 |
| 7 | Netherfield | 114.4 |
| 8 | Wolverton | 109.3 |
| 9 | Beanhill | 108.0 |
| 10 | Central Bletchley | 107.3 |
| 11 | Neath Hill | 98.0 |
| 12 | Fullers Slade | 94.4 |
| 13 | Westcroft | 93.9 |
| 14 | Conniborrow | 91.7 |
| 15 | Campbell Park | 90.0 |
| 16 | Greenleys | 84.8 |
| 17 | Willen | 81.4 |
| 18 | Broughton & Atterbury | 81.0 |
| 19 | Stantonbury | 79.4 |
| 20 | Fishermead | 79.4 |
| 21 | Peartree Bridge | 78.1 |
| 22 | New Bradwell | 77.5 |
| 23 | Water Eaton | 76.3 |
| 24 | Great Linford | 70.0 |
| 25 | Hodge Lea | 66.4 |

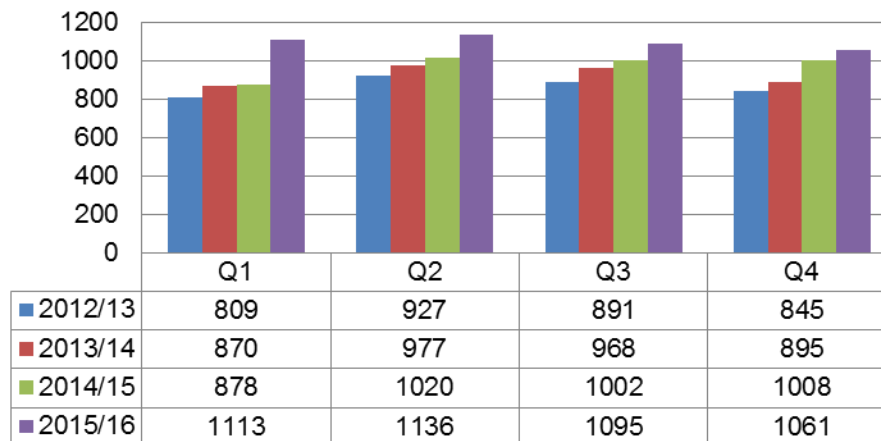
Domestic Abuse: The National Picture

- “Any incident or pattern of incidents of controlling, coercive, threatening behaviour, violence or abuse between those aged 16 or over who are, or have been, intimate partners or family members regardless of gender or sexuality. The abuse can encompass, but is not limited to: Psychological, Physical, Sexual, Financial, Emotional”.
- 2.1m victims of DA each year
- On average high risk victims experience 2.6 years of DA prior to seeking help
- 130,000 children live in a home with high risk of DA
- Repeat Rate: 57.7%, compared with 56.6% for Thames Valley

Domestic Abuse: The Local Picture

- During 2015, 7113 reports of DA Incidents
- 5.6% increase compared with previous year
- DV Incidents involving children: 12.7% rise during 2015/16

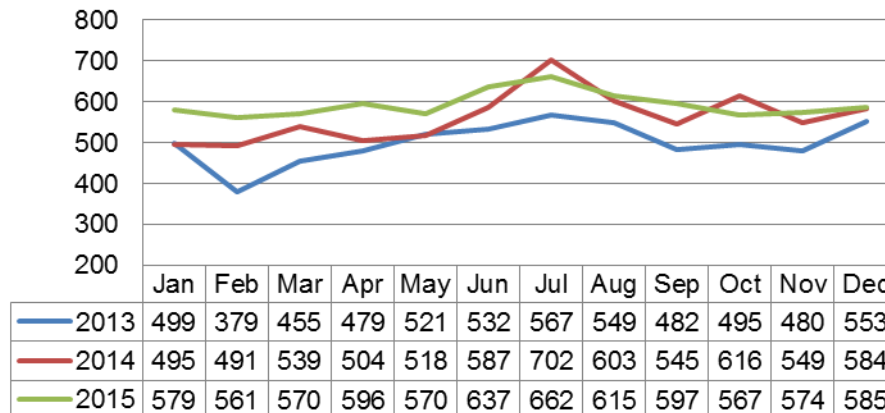
Domestic Incidents in MK Involving Children 2012/13 - 2015/16



Domestic Abuse: The Local Picture

- CSEW: 6.1% of adults will be victims each year
- Applied to MK, this figure is 12,330
- 7113 reports during 2015 is 57.7% of predicted occurrence
- Within Thames Valley, only Slough has a higher proportion

Domestic Abuse Incidents 2013 - 2015



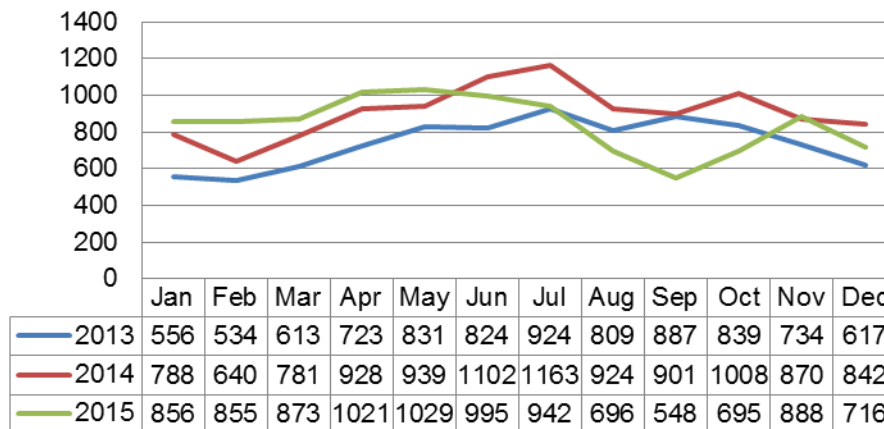
ASB: The National Picture

- Police recorded ASB reduced by 8% in 2015
- CSEW: 27% of respondents experienced ASB during the previous year

ASB: The Local Picture

- 40.4% of residents agreed with the statement '*the police and other local public services deal effectively with ASB in your local area*' (16.8% disagreed) – Citizens Survey
- MKC recorded ASB: 7% decrease
- Flytipping accounts for 48% of MKC recorded ASB

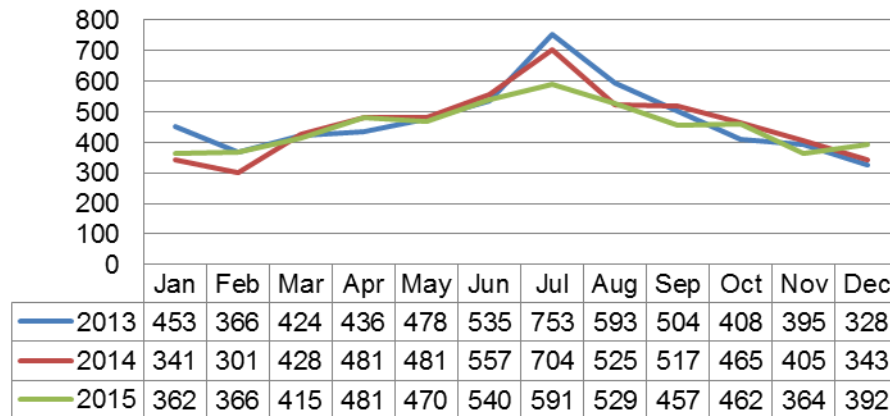
Total MKC Recorded ASB: 2013 - 2015



ASB: The Local Picture

- TVP Recorded ASB: 2.1% reduction
- Personal, Community and Environmental (19.6%, 5.9% and 74.6%)

Total TVP Recorded ASB: 2013 - 2015



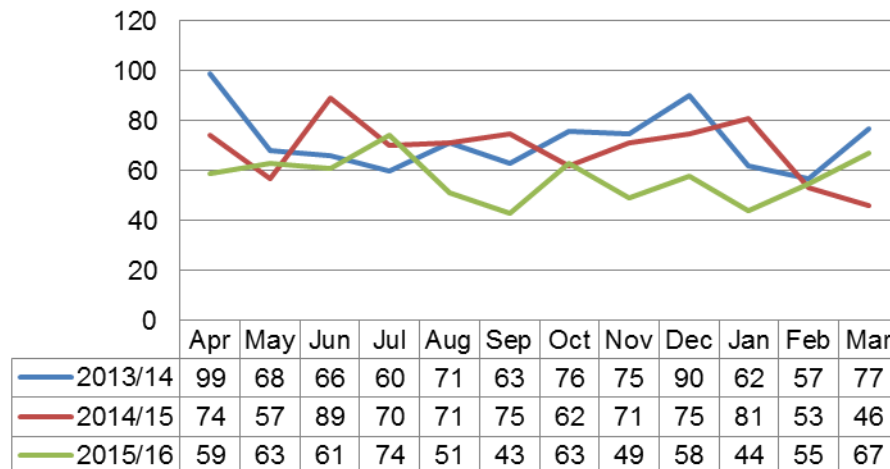
Substance Misuse: The National Picture

- 8.6% of adults have taken an illicit drug in the last year
- 34.7% have taken a drug at some point during their lifetime
- There is an increasing trend for abstinence over the last decade: 21% of adults identify as teetotal (19% in 2005)
- Alcohol related harm cost the UK £21bn, with £3.5bn to the NHS alone

Substance Misuse: The Local Picture

- Gradual reduction in MK Drug Offences – 2015/16 : 16.6% fall
- 58.6% of MK Drug Offences: Possession of Cannabis
- May 2016: illegal to sell, produce, import or export NPS – impact being monitored
- 25% of adults in MK thought to drink in excess of guidelines
- 2011-2013: 76 MK residents died of preventable liver disease

Drug Offences: 2013/14 - 2015/16



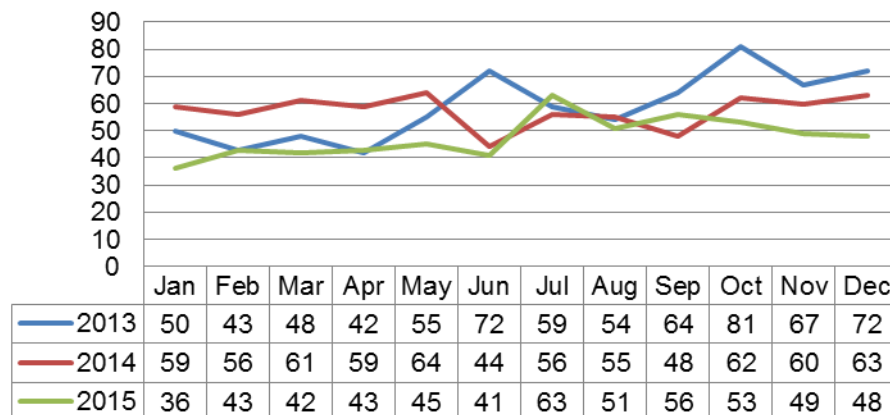
Road Safety: The National Picture

- Personal Injury Collisions (PICs) - recorded by Police since 1979
- Casualty = an individual involved in a PIC (Slight, Serious and Fatal)
- During 2014 a total of 194,477 casualties of all severities – 21% reduction compared with the period 2005-2009
- Between 2013 and 2014 vehicle traffic levels increased by 2.4% on UK roads

Road Safety: The Local Picture

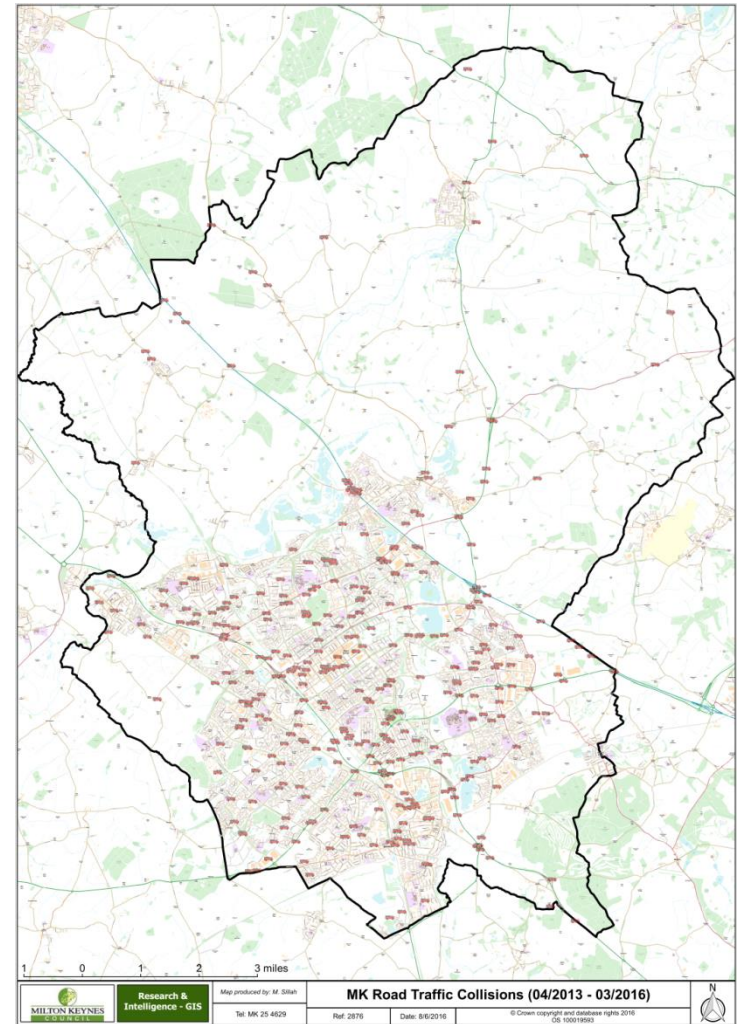
- TVP recorded PICs: strong reductions over last 3 years
- During 2015, a total of 570 PICs – 17.0% reduction compared with 2014
- Casualties on MK Roads: 806 reports in 2015 – 23.1% reduction compared with 2014
- 2015 Casualties: 729 Slight, 75 Serious, 2 Fatal

PICs: MK Roads Only - 2013 - 2015



Road Safety: The Local Picture

- BFRS Data: Concentration around major junctions:
 - M1 Newport Pagnell Services
 - A5 North-West
 - South: Buckingham Road



Any Questions?